



Annual Production Sale



Sunday

MARCH 8 2015
1:00 PM

at the ranch • Florence, South Dakota

Selling

55 Registered Yearling Angus Bulls
20 Registered Yearling Charolais Bulls
10 Registered Yearling Angus Heifers
110 Commercial Angus Heifers

www.rbmlivestock.com



Sunday
MARCH 8 2015
 1:00 PM
at the ranch • Florence, South Dakota

Lunch: 11:30 A.M. – 1:00 P.M

SALE INFORMATION

Sale Location 44115 155th Street, Florence, SD 57235
Directions from Florence: West on Highway 20 to 441st Avenue, then 3 miles north and 1/2 mile east or 23 miles northwest of Watertown or 25 miles south-east of Webster.

Sale Day Numbers RBM Sale Barn: (605) 758-2456
 Mike Bergh Cell: (605) 881-1652
 Ryan Bergh Cell: (605) 881-7499

Auctioneer Al Conover, Baxter, IA • (515) 491-8078
 Dustin Carter, Vermilion, SD • (712) 898-9972

Livestock Reps Donnie Leddy; *The Cattle Business Weekly*, 605-695-0113
 Chris Effling; *Tri-State Livestock News* 605-769-0142
 Jeff Kapperman; *TriState Neighbor*, 605-940-5104
 Colt Keffer; *Charolais Journal*, 765-376-8784
 Vern Frey; *Frey Marketing* 701-537-5383

Volume Discount Purchased by One Firm: Bulls only
 – 3 Bulls - 3% discount
 – 4 Bulls – 4% discount
 – 5 Bulls – 5% discount
 – Maximum of 10%



Herd Health Birth: Solid dose neck pill covering all bacterial aspects of pasteurilla Mycoplasma. Turnout: 7-way/IBR, BVD, BRSV, PI3, spore pill. Prewaning: IBR, BVD, BRSV, PI3, solid dose neck pill, Pasteurella Mycoplasma. Weaning: Afterwean (booster of IBR, BVD, BRSV, PI3 of greater magnitude) Semen testing: Lepto Vibrio, all strains IBR, BRSV, BVD, PI3, Harjo-Bovis; Anthrax, Foot Rot & Pinkeye and injectible Dectomax

Wintering of bulls Bulls are kept free of charge until May 1st
Delivery Bulls Only, \$100 bill if you take bull home sale day. Delivery will start immediately following sale. Heifers – we will help arrange trucking.

Liability All persons attending this sale do so at their own risk.

Semen Interest RBM Livestock will be retaining one-third revenue sharing semen interest in all bulls selling. This means if we would like to collect semen on the bull for our own use, we would have the option to do so. Also, if semen is sold we would retain one-third revenue. The new owners of the bulls will have full possession and full salvage value.

Guarantee – the RBM Guarantee – the best in the cattle business.

Watch & bid online for FREE at DVAuction.com

Buying online is as easy as 1, 2, 3...

1. Create an account at www.dvauction.com under the “register” tab
2. Apply for bidding approval by clicking on the “details” tab at least 24 hours prior to the auction—a DV representative will notify you once you have been approved
3. Tune in for the sale and make your purchases!

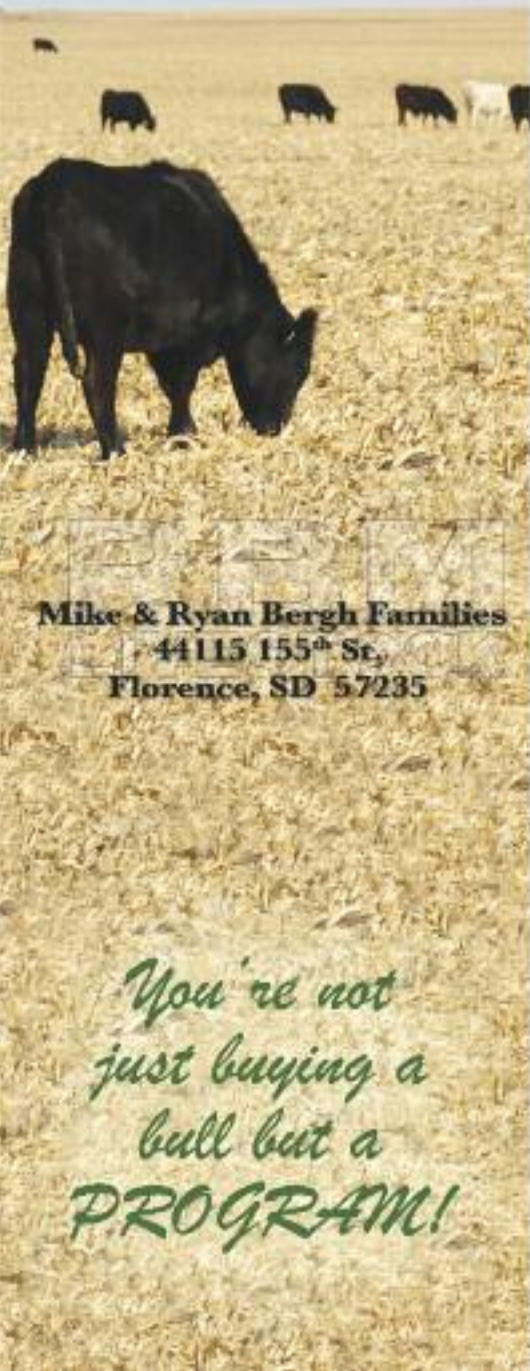
High speed internet is required for bidding—be sure to check the lag-time monitor in the top left corner to ensure real-time broadcasts.

Proxy bidding—register a proxy bid & let our system represent your bid while you’re away. Look for the “proxy bid” tab on the auction listing, and fill in your maximum bids. We’ll handle the rest!

Having troubles? You can type a message to the operator or call (402) 474-5557.

DVAuction DVA Rep. Justin Dikoff (605) 290-0635 – email jdikoff@dvauction.com
 Please feel free to contact me with questions about the sale or to view the cattle.

EPDs updated as of 2-4-15



Mike & Ryan Bergh Families
 44115 155th St.
 Florence, SD 57235

You're not just buying a bull but a PROGRAM!

Best guarantee in the business – the RBM Guarantee

Welcome to our annual sale – 2015 edition

On behalf of all of us here at RBM, thank you for taking time to look at our program. If you have any questions, don't hesitate to call us.

This sale offers many ET full brothers and A.I. sired calves. We calf early making it an advantage to you - these bulls have more maturity and the ability to cover more cows in their first breeding season.

2014 has brought an amazing cattle market setting record numbers in all sectors of the industry. Cattle producers have an opportunity to purchase seed stock that will add pounds to their calf crop whenever they are marketed. With the markets we have today, there never has been a better investment in bulls that will increase your program by 50-100 lbs. times \$2.00-\$3.00 cwt. **THAT'S REAL MONEY!**

Our goals have never changed in producing cattle that will have moderate birth weights, high performance with size and growth to meet the needs of the beef industry. People finishing cattle want to buy high quality cattle with a program, not just commodity cattle, that program is the RBM program.

We have purchased many customers' cattle this year and helped place many more. It is very rewarding for us as seed stock producers to see RBM genetics in demand throughout the livestock industry. The great reward is when we have sent your calves to a feeder, and he calls back and wants your calves again next year because they have performed very well for him. **THAT'S THE RBM PROGRAM.**

This year's sale will be a VIDEO AUCTION (no cattle will enter the ring). All cattle will be displayed as in previous years to be viewed before and during the sale. This will make it a bit easier on us on sale day and better for the customer and cattle. Videos will be available to view online prior to sale day (approx. Feb. 15). All the bulls will be semen tested prior to the sale. We will keep the bulls until May 1. The heifers can be picked up sale day or shortly thereafter.

If you take your bull home sale day, you will receive a crisp \$100 bill.



The Berghs

Mike & Barb

Ryan & Kim



Mike & Barb Bergh



Ryan, Kim, Tate, Trevor & Ty Bergh



CONNEALY IMPRESSION [AMF-CAF-DDF-M1F-NHF]

Reg. #:#15543702 BD: 01/29/06 Tattoo: 6262

EPDs	BW	WW	YW	Milk	Marb	RE	\$B
	1.2	65	107	26	.59	.94	102.47

CONNEALY REFLECTION
 BON VIEW NEW DESIGN 878
 HAPPY GRILL OF CONANGA 6260
 VERMILION DATELINE 7078
PEARL PAMMY OF CONANGA 194
 PEARL JAM OF CONANGA 6114

B/R NEW DESIGN 036
 BON VIEW GAMMER 85
 N BAR EMULATION EXT
 HAPPY DATE OF CONANGA
 CONNEALY DATELINE
 VERMILION BLACKBIRD 5044
 STEVENSON ROYCE 741C
 PRIDES STACKER CONANGA 6226

Connealy Impression is a super attractive and heavy muscled with added frame. Outstanding birth to yearling spread with strong carcass merit and overall beef value.



BASIN CHARISMA U691 - DONOR DAM FOR LOTS 1-4



1 RBM IMPRESSION B01



Tag#: M955 Reg. #:+18014469 Tattoo: B01

BD: 12/14/13 BW: 66 WW/Ratio: 713/100 YW/Ratio: 1247/100

EPDs	BW	WW	YW	Milk	Marb	RE	\$B
	+1.4	+59	+104	+30	+48	+61	91.39

ULTRASOUND: %IMF/Ratio: 3.83/94 Ribeye/Ratio: 13.8/97 Jan. 28 Wt.: 1384

CONNEALY IMPRESSION
 CONNEALY REFLECTION
 PEARL PAMMY OF CONANGA 194
 EXAR 263C
BASIN CHARISMA U691
 BASIN CHARISMA 4866

BON VIEW NEW DESIGN 878
 HAPPY GRILL OF CONANGA 6260
 VERMILION DATELINE 7078
 PEARL JAM OF CONANGA 6114
 BON VIEW NEW DESIGN 1407
 EXAR JUNE C 3577
 BASIN RAINMAKER 747L
 BASIN CHARISMA 1474

2 RBM IMPRESSION B06



Tag#: V807 Reg. #:+18032842 Tattoo: B06

BD: 12/20/13 BW: 67 WW/Ratio: 709/100 YW/Ratio: 1267/100

EPDs	BW	WW	YW	Milk	Marb	RE	\$B
	+1.4	+59	+104	+30	+48	+61	91.39

ULTRASOUND: %IMF/Ratio: 5.21/128 Ribeye/Ratio: 12.6/89 Jan. 28 Wt.: 1394

Heifer bull

1-4 Full brothers. Here is an opportunity to buy 4 full brothers that are Heifer bulls backed by a great cow family sired by the proven hfr bull with calving ease and carcass merit. The best of both worlds!



3 RBM IMPRESSION B12

Tag#: 835 Reg. #: +18014473 Tattoo: B12
 BD: 12/23/13 BW: 77 WW/Ratio: 819/100 YW/Ratio: 1401/100
EPDs BW WW YW Milk Marb RE \$B
 I+1.4 I+59 I+104 I+30 I+.48 I+.61 +91.39
 ULTRASOUND: %IMF/Ratio: 3.38/83 Ribeye/Ratio: 16.1/113 Jan. 28 Wt.: 1527
 Heifer bull



4 RBM IMPRESSION B14

Tag#: M862 Reg. #: +18019441 Tattoo: B14
 BD: 12/24/13 BW: 65 WW/Ratio: 726/100 YW/Ratio: 1308/100
EPDs BW WW YW Milk Marb RE \$B
 I+1.4 I+59 I+104 I+30 I+.48 I+.61 91.39
 ULTRASOUND: %IMF/Ratio: 4.14/102 Ribeye/Ratio: 16.4/115 Jan. 28 Wt.: 1431
 Heifer bull



CONNEALY SHREK 4242

Reg. #: 16204949 BD: 01/29/08 Tattoo: 8241
EPDs BW WW YW Milk Marb RE \$B
 0 74 130 28 .67 .64 116.77
 GAR-EGL PROTEGE RITO 112 OF 2536 RITO 616 RITO 616 OF 4820 6807
 L B 6807 ISABEL 339 G A R PRECISION 2536
 CONNEALY DANNY BOY D H D TRAVELER 6807
 L B E31 ISABEL 168 CONNEALY TIMELINE
BLACK SHELL OF CONANGA 10 ENERGY OF CONANGA 4851
 BLACK SHEBA OF CONANGA 010 RITO 616 OF 4820 6807
 BLACK SUE OF CONANGA 349

Shrek is used to make big framed, high performing cattle with bred in feed efficiency - females with perfect udders.

5 RBM SHREK B31

Tag#: Z32 Reg. #: 18031800 Tattoo: B31
 BD: 12/31/13 BW: 54 WW/Ratio: 729/102 YW/Ratio: 1343/104
EPDs BW WW YW Milk Marb RE \$B
 -3 65 116 22 I+.65 I+.42 105.73
 ULTRASOUND: %IMF/Ratio: 6.04/118 Ribeye/Ratio: 12.4/110 Jan. 28 Wt.: 1387

CONNEALY SHREK 4242 GAR-EGL PROTEGE RITO 112 OF 2536 RITO 616
 BLACK SHELL OF CONANGA 10 L B 6807 ISABEL 339
RBM BLACKBIRD Z32 CAR EFFICIENT 534 CONNEALY DANNY BOY
 BALDRIDGE BLACKBIRD R115 BLACK SHEBA OF CONANGA 010
 K C F BENNETT EFFICIENT
 CAR MISS SUSIE 308
 BR MIDLAND
 BALDRIDGE BLACKBIRD L594

Heifer bull. Out of 1st Calf Heifer

CALVING EASE BULLS SACRIFICE PERFORMANCE

Maybe in years past this statement would be true but here at RBM, we believe in cattle that have calving ease that will grow and perform without sacrificing the end product. As you look through the offering, you will find many bulls recommended for heifers. Don't be shy to use a recommended heifer bull on your mature cows as they will start little and will perform just like they have here.



6  **RBM SHREK B41**
 Tag#: Z223 Reg. #: 18021750 Tattoo: B41

BD: 01/3/14 BW: 80 WW/Ratio: 863/121 YW/Ratio: 1561/122

EPDs	BW	WW	YW	Milk	Marb	RE	SB
	4.1	81	139	33	+59	+77	116.58

ULTRASOUND: %IMF/Ratio: 5.92/116 Ribeye/Ratio: 14.9/111 Jan. 28 Wt.: 1609

CONNEALY SHREK 4242
 GAR-EGL PROTEGE
 BLACK SHELL OF CONANGA 10
 RITO 112 OF 2536 RITO 616
 L B 6807 ISABEL 339
 CONNEALY DANNY BOY
 BLACK SHEBA OF CONANGA 010
RBM CHARISMA Z223
 VAR ROCKY 80029
 BASIN CHARISMA U691
 HARB ONWARD 786 J H
 VERMILION LASS 0029
 EXAR 263C
 BASIN CHARISMA 4866

This bull has been a favorite of our since early on. His size, power, and performance matched with his correct well balanced deep body and easy fleshing ability make him a real world BEEF bull. Expect to see heavy use this spring at RBM. Out of 1st calf heifer.

7  **RBM SHREK B45**
 Tag#: Z31 Reg. #: 18021753 Tattoo: B45

BD: 01/04/14 BW: 40 WW/Ratio: 692/97 YW/Ratio: 1300/101

EPDs	BW	WW	YW	Milk	Marb	RE	SB
	-1.5	68	117	29	1+.61	1+.66	122.05

ULTRASOUND: %IMF/Ratio: 4.84/95 Ribeye/Ratio: 12/90 Jan. 28 Wt.: 1333

CONNEALY SHREK 4242
 GAR-EGL PROTEGE
 BLACK SHELL OF CONANGA 10
 RITO 112 OF 2536 RITO 616
 L B 6807 ISABEL 339
 CONNEALY DANNY BOY
 BLACK SHEBA OF CONANGA 010
RBM LASSIE Z31
 CONNEALY IN FOCUS 4925
 RBM LASSIE X155
 MYTTY IN FOCUS
 BLACK CANA OF CONANGA 206
 SITZ UPWARD 307R
 1407C OF R B M 864

Out of 1st calf heifer

BRING YOUR TRAILER AND RECEIVE A CRISP \$100 BILL
FOR TAKING YOUR BULL HOME SALE DAY!!!



BCC JAF UPWARD 15X

Reg. #: 16754476 BD: 01/27/10 Tattoo: 15X

EPDs	BW	WW	YW	Milk	Marb	RE	\$B
	2.1	60	116	29	.48	.61	110.21

SITZ UPWARD 307R
 CONNEALY ONWARD
 SITZ HENRIETTA PRIDE 81M

JAF EVERELDA ENTENSE 7S
 BR MIDLAND
 BT EVERELDA ENTENSE 536P

CONNEALY LEAD ON
 ALTUNE OF CONANGA 6104
 SITZ VALUE 7097
 SITZ HENRIETTA PRIDE 1370
 TWIN VALLEY PRECISION E161
 BR ROYAL LASS 7036-19
 LEACHMAN RIGHT TIME
 BT EVERELDA ENTENSE 226F

BCC JAF Upward 15X top selling bull in 2011 Montana Performance Bull Coop Sale. Long body, thick made, clean fronted performance bull.

8 RBM 15X B91



Tag#: FB587 Reg. #: 18019617 Tattoo: B91

BD: 02/06/14 BW:77 WW/Ratio: 799/107 YW/Ratio: 1364/100

EPDs	BW	WW	YW	Milk	Marb	RE	\$B
	1.7	60	107	25	1+.48	1+.57	113.60

ULTRASOUND: %IMF/Ratio: 5.01/112 Ribeye/Ratio: 14.1/99 Jan. 28 Wt.: 1346

BCC JAF UPWARD 15X
 SITZ UPWARD 307R
 JAF EVERELDA ENTENSE 7S

RBM TOTAL 587
 TC TOTAL 410
 ELDORENE OF PRAIRIEDGE 21

CONNEALY ONWARD
 SITZ HENRIETTA PRIDE 81M
 BR MIDLAND
 BT EVERELDA ENTENSE 536P
 BON VIEW NEW DESIGN 208
 TC ERICA EILEEN 2047
 TWIN VALLEY PRECISION E161
 ELDORENE OF PRAIRIEDGE 9

Smooth clean made bull with calving ease performance, with a look dam is a solid TC Total 410 daughter. Dams production 6 with avg. BW 77 WWB at 102 material brothers sold in 2014 to Richard Baier. Heifer bull



TC TOUCHDOWN 772

[AMF-CAF-M1F-NHF]

Reg. #:+15834705 BD: 01/29/07 Tattoo: 772

EPDs	BW	WW	YW	Milk	Marb	RE	\$B
	1.3	63	104	21	.40	.89	88.64

TC GRIDIRON 258
 G A R GRID MAKER
 TC BLACKBIRD 7049

TC MARCIA 1069
 CONNEALY FOREFRONT
 TC MARCIA 7105

G D A R TRAVELER 044
 G A R PRECISION 2536
 T C DIVIDEND 494
 O C C BLACKBIRD 902D
 CONNEALY FRONTLINE
 EILEEN HEARTLAND CONANGA6443
 TC DIVIDEND 963
 MARCIA 0022

9 RBM TOUCHDOWN B403



Tag#: B403 Reg. #:+18031737 Tattoo: B403

BD: 02/10/14 BW: 75 WW/Ratio: 771/100 YW/Ratio: 1366/100

EPDs	BW	WW	YW	Milk	Marb	RE	\$B
	1-.2	1+.52	1+.91	1+.28	1+.38	1+.45	91.74

ULTRASOUND: %IMF/Ratio: 3.75/83 Ribeye/Ratio: 14.8/104 Jan. 28 Wt.: 1308

9-12 lots are sure fire calving ease bulls backed by the solid cow 77M who has proven herself as producing some of the greatest calving ease bulls we have sold in the past years. This is a great opportunity to turn out 4 great calving ease full brothers. Join the long list of satisfied cattlemen that have bought and used bulls out of 77M. Heifer bull

TC TOUCHDOWN 772
 TC GRIDIRON 258
 TC MARCIA 1069

WOODHILL EVERGREEN 194K-77M
 BON VIEW NEW DESIGN 878
 WOODHILL EVERGREEN 1188-194K

G A R GRID MAKER
 TC BLACKBIRD 7049
 CONNEALY FOREFRONT
 TC MARCIA 7105
 B/R NEW DESIGN 036
 BON VIEW GAMMER 85
 N BAR BANDO 598 Y2587
 WOODHILL EVERGREEN 555-1188

10 RBM TOUCHDOWN B405

Tag#: B405 Reg. #:+18031732 Tattoo:B405
 BD: 02/08/14 BW: 70 WW/Ratio: 734/100 YW/Ratio: 1364/100
EPDs BW WW YW Milk Marb RE \$B
 I-2 I+52 I+91 I+28 I+.45 I+.44 94.17
 ULTRASOUND: %IMF/Ratio: 4.45/98 Ribeye/Ratio: 14.6/103 Jan. 28 Wt.: 1305
 Heifer bull.



11 RBM TOUCHDOWN B406

Tag#: B406 Reg. #:+18031739 Tattoo:B406
 BD: 02/08/14 BW: 70 WW/Ratio: 778/100 YW/Ratio: 1332/100
EPDs BW WW YW Milk Marb RE \$B
 I-2 I+52 I+91 I+28 I+.44 I+.41 91.50
 ULTRASOUND: %IMF/Ratio: 4.34/96 Ribeye/Ratio: 14.2/100 Jan. 28 Wt.: 1285
 Heifer bull.



12 RBM TOUCHDOWN B408

Tag#: B408 Reg. #:+18031735 Tattoo:B408
 BD: 02/10/14 BW: 72 WW/Ratio: 664/100 YW/Ratio: 1210/100
EPDs BW WW YW Milk Marb RE \$B
 I-2 I+52 I+91 I+28 I+.53 I+.41 79.10
 ULTRASOUND: %IMF/Ratio: 5.21/115 Ribeye/Ratio: 14.2/100 Jan. 28 Wt.: 1154
 Heifer bull.



KOUPALS B&B IDENTITY

Reg. #:16710463 BD: 01/01/10 Tattoo: 0020
EPDs BW WW YW Milk Marb RE \$B
 +1.9 67 126 35 .47 .97 130.90
 SITZ UPWARD 307R CONNEALY ONWARD CONNEALY LEAD ON
 SITZ HENRIETTA PRIDE 81M ALTUNE OF CONANGA 6104
 G A R EXALTATION 3144 SITZ VALUE 7097 SITZ HENRIETTA PRIDE 1370
 B&B ERICA 605 N BAR EMULATION EXT
 B&B ERICA 4064 G A R SCOTCH CAP 309
 B/R NEW DIMENSION 7127
 B&B ERICA 609

Identity has much muscle and stoutness of bone as you can find. He combines power and performance with smoothness, eye appeal and correctness.

13 RBM IDENTITY B98

Tag#: V801 Reg. #:+18019613 Tattoo:B98
 BD: 02/08/14 BW: 67 WW/Ratio: 688/100 YW/Ratio: 1213/100
EPDs BW WW YW Milk Marb RE \$B
 I+2.2 I+54 I+98 I+21 I+.37 I+.56 102.37
 ULTRASOUND: %IMF/Ratio: 5.56/100 Ribeye/Ratio: 13.7/100 Jan. 28 Wt.: 1198

KOUPALS B&B IDENTITY SITZ UPWARD 307R CONNEALY ONWARD
 B&B ERICA 605 SITZ HENRIETTA PRIDE 81M
 RIVER HILLS RAKETEER R385 G A R EXALTATION 3144
RBM RAKETEER A217 BR MIDLAND
 616 OF R B M 534 BAR S EDELLA 3047
 W A F 616 RITO 32
 NEUTRON OF R B M X3 202

14 RBM IDENTITY B100

Tag#: FB858 Reg. #:18019622 Tattoo:B100
 BD: 02/09/14 BW: 58 WW/Ratio: 686/92 YW/Ratio: 1406/107
EPDs BW WW YW Milk Marb RE \$B
 -6 53 102 30 I-.40 I+.30 108.76
 ULTRASOUND: %IMF/Ratio: 4.56/99 Ribeye/Ratio: 13/99 Jan. 28 Wt.: 1214

KOUPALS B&B IDENTITY SITZ UPWARD 307R CONNEALY ONWARD
 B&B ERICA 605 SITZ HENRIETTA PRIDE 81M
 MOHNEN 6106-655 G A R EXALTATION 3144
RBM 6106-858 WULFFS EXT 6106
 YUKON 1795 R B M MOHNEN RUTH 232
 MILLERS YUKON K98
 MISS BANDO OF R B M 509

Use on larger framed hfrs.

Heifer bull.



KESSLERS FRONTMAN R001 [AMF-CAF-DDF-M1F-NHF]

Reg. #: 15180461 BD: 01/01/05 Tattoo: B402

EPDs	BW	WW	YW	Milk	Marb	RE	SB
	.1	51	85	35	.02	.97	67.24

CONNEALY FRONT PAGE 0228
 CONNEALY FOREFRONT
 EBONY LIT OF CONANGA 840

KESSLERS BELL 0024
 TC RANCHER 056
 KESSLERS BELL 8055

CONNEALY FRONTLINE
 EILEEN HEARTLAND CONANGA6443
 G D A R TRAVELER 044
 EBONY LIL OF CONANGA
 LEACHMAN PROMPTER
 T C JESTRESS 6004
 B/R NEW DESIGN 036
 KESSLERS RAIN BELL 101

Kessler's Frontman progeny display a "gato" combination of calving ease, muscle and overall phenotype. High accuracy with solid performance. He will produce great females.

15 RBM FRONTMAN

Tag#: B402 Reg. #: +18032829 Tattoo: B402

BD: 02/12/14 BW: 76 WW/Ratio: 774/100 YW/Ratio: 1364/100

EPDs	BW	WW	YW	Milk	Marb	RE	SB
	-1.5	+47	+86	+33	+49	-5.6	94.57

ULTRASOUND: %IMF/Ratio: 4.89/108 Ribeye/Ratio: 14.2/100 Jan. 28 Wt.: 1301

KESSLERS FRONTMAN R001
 CONNEALY FRONT PAGE 0228
 KESSLERS BELL 0024

ALC BLACKBIRD I04U
 MYTTY IN FOCUS
 ALC BLACKBIRD 6707

CONNEALY FOREFRONT
 EBONY LIT OF CONANGA 840
 TC RANCHER 056
 KESSLERS BELL 8055
 S A F FOCUS OF E R
 MYTTY COUNTESS 906
 CONNEALY LEAD ON
 BALDRIDGE BLACKBIRD M868

Out of the great I04U cow.

17 RBM FRONTMAN B400

Tag#: B400 Reg. #: +18024841 Tattoo: B400

BD: 02/08/14 BW: 66 WW/Ratio: 746/100 YW/Ratio: 1359/100

EPDs	BW	WW	YW	Milk	Marb	RE	SB
	-1.8	+46	+81	+35	+19	+4.2	76.70

ULTRASOUND: %IMF/Ratio: 3.53/78 Ribeye/Ratio: 14/99 Jan. 28 Wt.: 1303

KESSLERS FRONTMAN R001
 CONNEALY FRONT PAGE 0228
 KESSLERS BELL 0024

WOODHILL EVERGREEN 194K-77M
 BON VIEW NEW DESIGN 878
 WOODHILL EVERGREEN 1188-194K

CONNEALY FOREFRONT
 EBONY LIT OF CONANGA 840
 TC RANCHER 056
 KESSLERS BELL 8055
 B/R NEW DESIGN 036
 BON VIEW GAMMER 85
 N BAR BANDO 598 Y2587
 WOODHILL EVERGREEN 555-1188

Heifer bull

18 RBM BOBCAT B407

Tag#: B407 Reg. #: +18024838 Tattoo: B407

BD: 02/17/14 BW: 75 WW/Ratio: 748/100 YW/Ratio: 1377/100

EPDs	BW	WW	YW	Milk	Marb	RE	SB
	-1.8	+49	+92	+33	+5.6	-1.03	84.61

ULTRASOUND: %IMF/Ratio: 4.74/104 Ribeye/Ratio: 14.3/101 Jan. 28 Wt.: 1295

WK BOBCAT
 CONNEALY RIGHT ANSWER 746
 WK MISS ANGUS 7127

WOODHILL EVERGREEN 194K-77M
 BON VIEW NEW DESIGN 878
 WOODHILL EVERGREEN 1188-194K

S A V FINAL ANSWER 0035
 HAPPY DELL OF CONANGA 262
 SCHURRTOP MC 2500
 WK MISS ANGUS 1403
 B/R NEW DESIGN 036
 BON VIEW GAMMER 85
 N BAR BANDO 598 Y2587
 WOODHILL EVERGREEN 555-1188

Full Brothers sold to Horter Farms in 2014

16 RBM FRONTMAN B404

Tag#: B404 Reg. #: +18024842 Tattoo: B404

BD: 02/09/14 BW: 75 WW/Ratio: 805/100 YW/Ratio: 1346/100

EPDs	BW	WW	YW	Milk	Marb	RE	SB
	+1.8	+54	+91	+32	+38	+4.1	87.03

ULTRASOUND: %IMF/Ratio: 4.6/101 Ribeye/Ratio: 14.4/101 Jan. 28 Wt.: 1299

KESSLERS FRONTMAN R001
 CONNEALY FRONT PAGE 0228
 KESSLERS BELL 0024

RIVER HILLS BLOSSOM R643
 WOODHILL ADMIRAL 77K
 RIVER HILLS BLOSSOM 4284

CONNEALY FOREFRONT
 EBONY LIT OF CONANGA 840
 TC RANCHER 056
 KESSLERS BELL 8055
 S A F FOCUS OF E R
 WOODHILL LASS 344-1178
 SITZ ALLIANCE 6595
 S V F BLACKBIRD BLOSSOM 95J

Heifer bull



WK BOBCAT

[DDF-M1F]

Reg. #: 16447442 BD: 02/01/09 Tattoo: 9208

EPDs	BW	WW	YW	Milk	Marb	RE	SB
	.1	57	107	30	.58	.03	80.69

CONNEALY RIGHT ANSWER 746
 S A V FINAL ANSWER 0035
 HAPPY DELL OF CONANGA 262

WK MISS ANGUS 7127
 SCHURRTOP MC 2500
 WK MISS ANGUS 1403

SITZ TRAVELER 8180
 S A V EMULOUS 8145
 HYLINE RIGHT TIME 338
 HAPPY DAZE OF CONANGA 6260
 SCHURRTOP M C
 SCHURRTOP R S 1413 2153
 BON VIEW NEW DESIGN 1407
 WK MISS ANGUS 6134

WK Bobcat was very popular with those that have seen him because of his incredible calving ease, performance and his body volume and muscle thickness.



CONNELY FINAL PRODUCT [AMF-CAF-D2F-DDF-M1F-NHF]

Reg. #: 15848422 BD: 01/23/07 Tattoo: 7212

EPDs	BW	WW	YW	Milk	Marb	RE	\$B
	.8	65	118	30	.35	.75	79.42

CONNELY PRODUCT 568
PRIDE FINE OF CONANGA 566
G A R RETAIL PRODUCT
G A R EXT 4927
BON VIEW NEW DESIGN 878
PRIDE FAN OF CONANGA 6456
LARKS CANYON 74D4
RONNA OF CONANGA 64452
PAPA UNIVERSE 515
EBONY ASY OF CONANGA

EBONISTA OF CONANGA 471
DAM
CONNELY DEEP CANYON 454

Final Product progeny have been highly sought after for their birth-to-yearling spread and impressive phenotype. Unique low BW sire with outstanding structure, thickness and muscle shape.

19 RBM FINAL PRODUCT B70

Tag#: Y10 Reg. #: Tattoo: E56

BD: 01/14/14 BW: 68 WW/Ratio: 776/104 YW/Ratio: 1186/94

EPDs	BW	WW	YW	Milk	Marb	RE	\$B

ULTRASOUND: %IMF/Ratio: 4.12/92 Ribeye/Ratio: 11.6/92 Jan. 28 Wt.: 1116

CONNELY FINAL PRODUCT
EBONISTA OF CONANGA 471
G A R RETAIL PRODUCT
PRIDE FINE OF CONANGA 566
CONNELY DEEP CANYON 454
EBONISA OF CONANGA 5469
SITZ TRAVELER 8180
S A V EMULOUS 8145
J P FAME LINE 310
J P TRENDLINE 303

RBM TRENDLINE Y10
GENETICS BY DESIGN 049
RBM TRENDLINE 902

Heifer Bull - EPDs available sale day.

20 RBM FINAL PRODUCT B70

Tag#: Y81 Reg. #: 18019464 Tattoo: B70

BD: 01/23/14 BW: 63 WW/Ratio: 681/91 YW/Ratio: 1163/92

EPDs	BW	WW	YW	Milk	Marb	RE	\$B
	-.1	58	109	29	I+.35	I+.60	89.43

ULTRASOUND: %IMF/Ratio: 4.2/94 Ribeye/Ratio: 14.1/99 Jan. 28 Wt.: 1154

CONNELY FINAL PRODUCT
EBONISTA OF CONANGA 471
G A R RETAIL PRODUCT
PRIDE FINE OF CONANGA 566
CONNELY DEEP CANYON 454
EBONISA OF CONANGA 5469
CONNELY ONWARD
SITZ HENRIETTA PRIDE 81M
RBM DUKE 49
1407C OF R B M 614

RBM PEGGY Y81
SITZ UPWARD 307R
RBM DUKE 428

Heifer Bull.



SYDGEN CONTRACT 9410 [CAF-DDF-M1F]

Reg. #: +16388538 BD: 01/19/09 Tattoo: 9410

EPDs	BW	WW	YW	Milk	Marb	RE	\$B
	-1.5	39	78	25	.82	.48	115.99

SYDGEN CONTACT
S A F CONNECTION
S A F FOREVER LADY 0020
SVF GDAR 216 LTD
S A F ROYAL QUEEN 5084
S A F HI CHOICE
G D A R FOREVER LADY 246
VERMILION DATELINE 7078
VERMILION LASS 7969
GARDENS EXPEDITION
BASIN LADY H304

BASIN LADY M017
BASIN LADY 874K

21 RBM CONTRACT B401

Tag#: B401 Reg. #: +18038386 Tattoo: B401

BD: 02/10/14 BW: 72 WW/Ratio: 789/100 YW/Ratio: 1157/100

EPDs	BW	WW	YW	Milk	Marb	RE	\$B
	I+.1	I+.46	I+.90	I+.29	I+.60	I+.31	75.08

ULTRASOUND: %IMF/Ratio: 4.7/104 Ribeye/Ratio: 13.5/95 Jan. 28 Wt.: 1130

Heifer bull

22 RBM CONTRACT B410

Tag#: B410 Reg. #: +18038276 Tattoo: B410

BD: 02/10/14 BW: 68 WW/Ratio: 671/100 YW/Ratio: 1210/100

EPDs	BW	WW	YW	Milk	Marb	RE	\$B
	I+.1	I+.46	I+.90	I+.29	I+.65	I+.36	82.89

ULTRASOUND: %IMF/Ratio: 5.23/115 Ribeye/Ratio: 14.2/100 Jan. 28 Wt.: 1156

Heifer bull





VAR ROCKY 80029

[DDF]

Reg. #: 16160601 BD: 03/22/08 Tattoo: 80029

EPDs	BW	WW	YW	Milk	Marb	RE	\$B
	5.0	72	125	35	.72	.80	110.42

HARB ONWARD 786 J H
 CONNEALY ONWARD
 H A R B JUANADA ERICA G75 JH

VERMILION LASS 0029
 CONNEALY DATELINE
 VERMILION LASS 8107

CONNEALY LEAD ON
 ALTUNE OF CONANGA 6104
 V D A R RITO 240
 JUANADA ERICA 9024 H A R B
 D H D TRAVELER 6807
 EILA EILA OF CONANGA
 S A F FAME
 VERMILION LASS 4841

Rocky 80029 A bull that needs no introduction to the angus breed. If your selling cattle by the pounds, he's your bull.



23 RBM ROCKY B18

Tag#: M922 Reg. #: +18019501 Tattoo: B18

BD: 12/24/13 BW: 78 WW/Ratio: 814/100 YW/Ratio: 1380/100

EPDs	BW	WW	YW	Milk	Marb	RE	\$B
	+3.3	+63	+113	+34	+51	+53	111.95

ULTRASOUND: %IMF/Ratio: 3.7/91 Ribeye/Ratio: 14/99 Jan. 28 Wt.: 1502

VAR ROCKY 80029

HARB ONWARD 786 J H
 VERMILION LASS 0029

BASIN CHARISMA U691

EXAR 263C
 BASIN CHARISMA 4866

CONNEALY ONWARD
 H A R B JUANADA ERICA G75 JH
 CONNEALY DATELINE
 VERMILION LASS 8107
 BON VIEW NEW DESIGN 1407
 EXAR JUNE C 3577
 BASIN RAINMAKER 747L
 BASIN CHARISMA 1474

23 - 24 lots full brothers. These two brothers have the credentials to produce power cattle. Full flush brothers sold in 2013 sale, high selling bull \$18,000.00 to Solsaa Angus, \$9500.00 to Schultz Cattle Company.

24 RBM ROCKY B29

Tag#: M926 Reg. #: +18019498 Tattoo: B29

BD: 12/28/13 BW: 85 WW/Ratio: 749/100 YW/Ratio: 1269/100

EPDs	BW	WW	YW	Milk	Marb	RE	\$B
	+3.3	+63	+113	+34	+57	+46	101.57

ULTRASOUND: %IMF/Ratio: 4.32/106 Ribeye/Ratio: 13.1/92 Jan. 28 Wt.: 1369



25 RBM ROCKY B34

Tag#: V803 Reg. #: +18019506 Tattoo: B34

BD: 12/30/13 BW: 68 WW/Ratio: 732/100 YW/Ratio: 1225/100

EPDs	BW	WW	YW	Milk	Marb	RE	\$B
	+1.7	+56	+101	+35	+59	+34	95.65

ULTRASOUND: %IMF/Ratio: 3.88/95 Ribeye/Ratio: 13.7/96 Jan. 28 Wt.: 1315

VAR ROCKY 80029

HARB ONWARD 786 J H
 VERMILION LASS 0029

WOODHILL EVERGREEN 194K-77M

BON VIEW NEW DESIGN 878
 WOODHILL EVERGREEN 1188-194K
 CONNEALY ONWARD
 H A R B JUANADA ERICA G75 JH
 CONNEALY DATELINE
 VERMILION LASS 8107
 B/R NEW DESIGN 036
 BON VIEW GAMMER 85
 N BAR BANDO 598 Y2587
 WOODHILL EVERGREEN 555-1188

Rocky out of 77M. Keep every female and sell big stout feeder steers.



RBM ROCKY Z220

[DDF]

Reg. #:+17419011 BD: 02/15/12 Tattoo: Z220

EPDs	BW	WW	YW	Milk	Marb	RE	\$B
	4.8	56	104	33	.48	.59	98.99

VAR ROCKY 80029
 HARB ONWARD 786 J H
 VERMILION LASS 0029
 EXAR 263C
BASIN CHARISMA U691
 BASIN CHARISMA 4866

CONNEALY ONWARD
 H A R B JUANADA ERICA G75 JH
 CONNEALY DATELINE
 VERMILION LASS 8107
 BON VIEW NEW DESIGN 1407
 EXAR JUNE C 3577
 BASIN RAINMAKER 747L
 BASIN CHARISMA 1474

Z220 Here is a Rocky that sold to Schultz Cattle Company in 2013. We are very excited about this bull. He will produce feeder cattle that will fee and gain. Full brothers sell Lot 23-24.

26 RBM ROCKY B110

Tag#: Y212 Reg. #:18014454 Tattoo:B110

BD: 02/12/14 BW: 87 WW/Ratio: 719/96 YW/Ratio:1316/104

EPDs	BW	WW	YW	Milk	Marb	RE	\$B
	4.9	56	94	25	1+.59	1+.64	93.59

ULTRASOUND: %IMF/Ratio: 4.93/110 Ribeye/Ratio: 15.8/111 Jan. 28 Wt.: 1271

RBM ROCKY Z220
 VAR ROCKY 80029
 BASIN CHARISMA U691

RBM PRINCESS Y212
 RIVER HILLS OBJECTIVE T195
 1407S OF R B M 314

HARB ONWARD 786 J H
 VERMILION LASS 0029
 EXAR 263C
 BASIN CHARISMA 4866
 S S OBJECTIVE T510 0T26
 RIVER HILLS BARBARA R330
 PLAINVIEW NEW DESIGN 48B
 IAR 0136 TRAV PRINCESS 2050



27 RBM ROCKY B120

Tag#: Y28 Reg. #:18014447 Tattoo:B120

BD: 02/14/14 BW: 75 WW/Ratio: 699/94 YW/Ratio: 1246/98

EPDs	BW	WW	YW	Milk	Marb	RE	\$B
	1.2	48	88	30	1+.42	1+.48	100.18

ULTRASOUND: %IMF/Ratio: 4.49/100 Ribeye/Ratio: 14.1/99 Jan. 28 Wt.: 1188

RBM ROCKY Z220
 VAR ROCKY 80029
 BASIN CHARISMA U691

RBM QUEEN Y28
 SYDGEN C C & 7
 SYDGEN 4646 ALLY 8131

HARB ONWARD 786 J H
 VERMILION LASS 0029
 EXAR 263C
 BASIN CHARISMA 4866
 S A F CONNECTION
 SYDGEN FOREVER LADY 4087
 SYDGEN ALLY 4646
 SYDGEN ROYAL QUEEN 413

Use on large framed hfrs

28 RBM ROCKY B147

Tag#: Y311 Reg. #:18014450 Tattoo:B147

BD: 02/24/14 BW: 72 WW/Ratio: 641/86 YW/Ratio: 1097/00

EPDs	BW	WW	YW	Milk	Marb	RE	\$B
	1.2	45	87	28	1+.48	1+.20	73.76

ULTRASOUND: %IMF/Ratio: 4.98/111 Ribeye/Ratio: 12.4/87 Jan. 28 Wt.: 1006

RBM ROCKY Z220
 VAR ROCKY 80029
 BASIN CHARISMA U691

RBM CLARA Y311
 SYDGEN C C & 7
 G G CLARA 859

HARB ONWARD 786 J H
 VERMILION LASS 0029
 EXAR 263C
 BASIN CHARISMA 4866
 S A F CONNECTION
 SYDGEN FOREVER LADY 4087
 J R JUICE 2005
 G G CLARA 200

Use on large frame hfrs



RBM CC7 Y40

Reg. #: 16984247	BD: 01/11/11	Tattoo: Y40					
EPDs	BW	WW	YW	Milk	Marb	RE	\$B
	-4.5	40	90	32	.81	.12	111.63
SYDGEN C C & 7	S A F CONNECTION		SVF GDAR 216 LTD S A F ROYAL QUEEN 5084 SYDGEN 1407 CORONA 2016 S A F FOREVER LADY 8292				
	SYDGEN FOREVER LADY 4087		S A F FOCUS OF E R MYTTY IN FOCUS MYTTY COUNTESS 906				
ALC BLACKBIRD I04U	ALC BLACKBIRD 6707		CONNEALY LEAD ON BALDRIDGE BLACKBIRD M868				

Y40 High selling bull in 2012. Sold for \$18,000.00 to Borns Angus. Heifer bull deluxe -4.5 BW EPD. WOW start title and grow from there. That is the RBM program.



29 RBM Y40 B07

Tag#: Z29	Reg. #: 18014471	Tattoo: B07					
BD: 12/20/13	BW: 50	WW/Ratio: 597/83	YW/Ratio: 1109/86				
EPDs	BW	WW	YW	Milk	Marb	RE	\$B
	-1.7	49	93	27	1+.70	1+.25	91.55
ULTRASOUND:	%IMF/Ratio: 5.67/111	Ribeye/Ratio: 11/82	Jan. 28 Wt.: 1155				
RBM CC7 Y40	SYDGEN C C & 7		S A F CONNECTION SYDGEN FOREVER LADY 4087 MYTTY IN FOCUS ALC BLACKBIRD 6707				
	ALC BLACKBIRD I04U		MYTTY IN FOCUS BLACK CANA OF CONANGA 206 GENETICS BY DESIGN 049 RBM DIRECTION 1478				
RBM ENCHANTREES Z29	CONNEALY IN FOCUS 4925						
	RBM ENCHANTREES X024						

Heifer bull. Out of 1st Calf Heifer.

30 RBM Y40 B16

Tag#: Z14	Reg. #: 18014467	Tattoo: B16					
BD: 12/24/13	BW: 68	WW/Ratio: 691/97	YW/Ratio: 1301/101				
EPDs	BW	WW	YW	Milk	Marb	RE	\$B
	.5	49	95	29	1+.55	1+.46	99.82
ULTRASOUND:	%IMF/Ratio: 3.93/77	Ribeye/Ratio: 13.4/100	Jan. 28 Wt.: 1358				
RBM CC7 Y40	SYDGEN C C & 7		S A F CONNECTION SYDGEN FOREVER LADY 4087 MYTTY IN FOCUS ALC BLACKBIRD 6707				
	ALC BLACKBIRD I04U		HARB ONWARD 786 J H VERMILION LASS 0029 TC ABERDEEN 759 RBM RAKETEER A217				
RBM LASSIE Z14	VAR ROCKY 80029						
	RBM ABERDEEN 49						

Heifer bull. Out of 1st Calf Heifer

31 RBM Y40 B21

Tag#: Z224	Reg. #: 0000000	Tattoo: B21					
BD: 12/24/13	BW: 59	WW/Ratio: 748/105	YW/Ratio: 1372/107				
EPDs	BW	WW	YW	Milk	Marb	RE	\$B
	-6	54	105	34	1+.71	1+.35	113.96
ULTRASOUND:	%IMF/Ratio: 5.78/114	Ribeye/Ratio: 14.1/105	Jan. 28 Wt.: 1433				
RBM CC7 Y40	SYDGEN C C & 7		S A F CONNECTION SYDGEN FOREVER LADY 4087 MYTTY IN FOCUS ALC BLACKBIRD 6707				
	ALC BLACKBIRD I04U		HARB ONWARD 786 J H VERMILION LASS 0029 EXAR 263C BASIN CHARISMA 4866				
RBM CHARISMA Z224	VAR ROCKY 80029						
	BASIN CHARISMA U691						

Heifer bull. Out of 1st Calf Heifer

W/C UPSIDE POTENTIAL 520X

[NHF]

Reg. #: 16808128	BD: 02/27/10	Tattoo: 520X					
EPDs	BW	WW	YW	Milk	Marb	RE	\$B
	6.0	80	131	30	.31	.69	122.55
SITZ UPWARD 307R	CONNEALY ONWARD		CONNEALY LEAD ON ALTUNE OF CONANGA 6104 SITZ VALUE 7097 SITZ HENRIETTA PRIDE 1370 G A R PRECISION 1680 W C C BLACKCAP C9 HIGH VALLEY 4C6 AMBUSH SITZ EVERELDA ENTENSE 023				
	SITZ HENRIETTA PRIDE 81M						
RIVER HILLS ENTENSE 520N	TWIN VALLEY PRECISION E161						
	BALDRIDGE EVERELDA ENTENSE 888						

520X was purchased from Werning Cattle Company to produce performance cattle. Off-spring of this bull are very markable and the kind we like feeding here at RBM. Use him to crush the scale down on sale day!

32 RBM POTENTIAL B84

Tag#: FB1478	Reg. #: 18014451	Tattoo: B84					
BD: 02/05/14	BW: 81	WW/Ratio: 869/116	YW/Ratio: 1378/108				
EPDs	BW	WW	YW	Milk	Marb	RE	\$B
	3.9	74	116	26	1+.22	1+.50	104.60
ULTRASOUND:	%IMF/Ratio: 3.63/81	Ribeye/Ratio: 15.6/110	Jan. 28 Wt.: 1341				
W/C UPSIDE POTENTIAL 520X	SITZ UPWARD 307R		CONNEALY ONWARD SITZ HENRIETTA PRIDE 81M TWIN VALLEY PRECISION E161 BALDRIDGE EVERELDA ENTENSE 888J C A FUTURE DIRECTION 5321 WAR HALL OF FAME 1120 7076 S A F TRAVELER 154 J K ENCHANTRESS 422				
	RIVER HILLS ENTENSE 520N						
RBM DIRECTION 1478	WAR DIRECTION 4124 5321 1120						
	J K ENCHANTRESS 971						

If you like them thick, deep and packed full of meat here is your bull.



33 RBM POTENTIAL B92

Tag#: X149 Reg. #: 18014452 Tattoo: B92

BD: 02/06/14 BW: 89 WW/Ratio: 905/121 YW/Ratio: 1447/114

EPDs	BW	WW	YW	Milk	Marb	RE	\$B
	5.6	76	124	31	I+.34	I+.54	122.96

ULTRASOUND: %IMF/Ratio: 4.14/92 Ribeye/Ratio: 15.2/107 Jan. 28 Wt.: 1395

W/C UPSIDE POTENTIAL 520X
SITZ UPWARD 307R
RIVER HILLS ENTENSE 520N

RBM EXT BAND X149
WAR ALLIANCE 9126 6006
SYDGEN EXT 8082

CONNELLY ONWARD
SITZ HENRIETTA PRIDE 81M
TWIN VALLEY PRECISION E161
BALDRIDGEEVERELDAENTENSE888J
SITZ ALLIANCE 6595
WAR BANDO 6006 598 4053
SYDGEN TRIUMPH
PAWS UP EXT 2023

34 RBM POTENTIAL B102

Tag#: H9948 Reg. #: 18014455 Tattoo: B102

BD: 02/10/14 BW: 85 WW/Ratio: 815/109 YW/Ratio: 1377/108

EPDs	BW	WW	YW	Milk	Marb	RE	\$B
	4.2	73	118	22	.18	.45	98.38

ULTRASOUND: %IMF/Ratio: 3.98/89 Ribeye/Ratio: 15/106 Jan. 28 Wt.: 1342

W/C UPSIDE POTENTIAL 520X
SITZ UPWARD 307R
RIVER HILLS ENTENSE 520N

GBS MISS KOUPALS 3136 9948
G B S SKYMERE LADY 7940

CONNELLY ONWARD
SITZ HENRIETTA PRIDE 81M
TWIN VALLEY PRECISION E161
BALDRIDGEEVERELDAENTENSE888J
KOUPALS B&B PRECISION 402
G B S LADY UNIVERSE 3313
V D A R TRAVELER 275
MISS G B S AMIGO 8784

35 RBM POTENTIAL B105

Tag#: X102 Reg. #: 18014464 Tattoo: B105

BD: 02/11/14 BW: 85 WW/Ratio: 694/93 YW/Ratio: 1278/101

EPDs	BW	WW	YW	Milk	Marb	RE	\$B
	4.0	60	101	24	I+.64	I+.53	115.25

ULTRASOUND: %IMF/Ratio: 5.79/129 Ribeye/Ratio: 14.3/101 Jan. 28 Wt.: 1257

W/C UPSIDE POTENTIAL 520X
SITZ UPWARD 307R
RIVER HILLS ENTENSE 520N

RBM ELSIE X012
GENETICS BY DESIGN 049
SYDGEN ELSIE A358

CONNELLY ONWARD
SITZ HENRIETTA PRIDE 81M
TWIN VALLEY PRECISION E161
BALDRIDGEEVERELDAENTENSE888J
B/R NEW DESIGN 036
G G CLARA 859
SYDGEN TRIUMPH
SIR WMS ELSIE K034

36 RBM POTENTIAL B116

Tag#: X271 Reg. #: 18014463 Tattoo: B116

BD: 02/14/14 BW: 81 WW/Ratio: 771/103 YW/Ratio: 1433/113

EPDs	BW	WW	YW	Milk	Marb	RE	\$B
	3.8	69	111	27	I+.50	I+.54	122.70

ULTRASOUND: %IMF/Ratio: 4.41/98 Ribeye/Ratio: 15.6/110 Jan. 28 Wt.: 1401

W/C UPSIDE POTENTIAL 520X
SITZ UPWARD 307R
RIVER HILLS ENTENSE 520N

RBM RITA X271
RIVER HILLS OBJECTIVE T195
RBM FRONTIER 466

CONNELLY ONWARD
SITZ HENRIETTA PRIDE 81M
TWIN VALLEY PRECISION E161
BALDRIDGEEVERELDAENTENSE888J
S S OBJECTIVE T510 0T26
RIVER HILLS BARBARA R330
B/R NEW FRONTIER 095
SIKS PHRED 68380

37 RBM POTENTIAL B126

Tag#: X010 Reg. #: 18014459 Tattoo: B126

BD: 02/15/14 BW: 93 WW/Ratio: 650/87 YW/Ratio: 1154/91

EPDs	BW	WW	YW	Milk	Marb	RE	\$B
	5.8	61	104	25	I+.50	I+.40	101.55

ULTRASOUND: %IMF/Ratio: 4.75/106 Ribeye/Ratio: 12.9/91 Jan. 28 Wt.: 1116

W/C UPSIDE POTENTIAL 520X
SITZ UPWARD 307R
RIVER HILLS ENTENSE 520N

RBM PRINCESS X010
GENETICS BY DESIGN 049
ALC PRINCESS S05U

CONNELLY ONWARD
SITZ HENRIETTA PRIDE 81M
TWIN VALLEY PRECISION E161
BALDRIDGEEVERELDAENTENSE888J
B/R NEW DESIGN 036
G G CLARA 859
S A V 8180 TRAVELER 004
ALC PRINCESS M45R

38 RBM POTENTIAL B137

Tag#: 88M Reg. #: 18014462 Tattoo: B137

BD: 02/18/14 BW: 81 WW/Ratio: 869/116 YW/Ratio: 1394/110

EPDs	BW	WW	YW	Milk	Marb	RE	\$B
	3.3	76	126	23	I+.28	I+.52	112.29

ULTRASOUND: %IMF/Ratio: 4.01/89 Ribeye/Ratio: 15.1/106 Jan. 28 Wt.: 1293

W/C UPSIDE POTENTIAL 520X
SITZ UPWARD 307R
RIVER HILLS ENTENSE 520N

WOODHILL EVERGREEN 439-88M
CIRCLE A 216 LTD 9377
WOODHILL EVERGREEN 786-439

CONNELLY ONWARD
SITZ HENRIETTA PRIDE 81M
TWIN VALLEY PRECISION E161
BALDRIDGEEVERELDAENTENSE888J
SVF GDAR 216 LTD
WOODHILL EVERGREEN 58-736
WOODHILL TRIPLE THREAT
WOODHILL EVERGREEN 58-786

Dam produced RBM Evergreen Rito 657

39 RBM POTENTIAL B132

Tag#: W49 Reg. #: Tattoo: B132

BD: 2/16/14 BW: 90 WW/Ratio: 681/NA YW/Ratio: NA/NA

EPDs	BW	WW	YW	Milk	Marb	RE	\$B

ULTRASOUND: %IMF/Ratio: Ribeye/Ratio: Jan. 28 Wt.: 1126

W/C UPSIDE POTENTIAL 520X
SITZ UPWARD 307R
RIVER HILLS ENTENSE 520N

RBM OBJECTIVE T195-1529
RIVER HILLS OBJECTIVE T195
1407C OF R B M 614

CONNELLY ONWARD
SITZ HENRIETTA PRIDE 81M
TWIN VALLEY PRECISION E161
BALDRIDGEEVERELDAENTENSE888J

Sells as commercial bull.

40 RBM POTENTIAL B144

Tag#: W1529 Reg. #: 18014460 Tattoo: B144

BD: 02/22/14 BW: 85 WW/Ratio: 698/94 YW/Ratio: 1221/97

EPDs	BW	WW	YW	Milk	Marb	RE	\$B
	5.0	57	99	28	I+.47	I+.40	95.19

ULTRASOUND: %IMF/Ratio: 5.21/116 Ribeye/Ratio: 13.2/93 Jan. 28 Wt.: 1165

W/C UPSIDE POTENTIAL 520X
SITZ UPWARD 307R
RIVER HILLS ENTENSE 520N

RBM OBJECTIVE T195-1529
RIVER HILLS OBJECTIVE T195
1407C OF R B M 614

CONNELLY ONWARD
SITZ HENRIETTA PRIDE 81M
TWIN VALLEY PRECISION E161
BALDRIDGEEVERELDAENTENSE888J
S S OBJECTIVE T510 0T26
RIVER HILLS BARBARA R330
CHESTNUT NEW DESIGN 112
MISS RITO OF R B M 809

41 RBM POTENTIAL B149

Tag#: S8304 Reg. #:18014461 Tattoo: B149

BD: 02/25/14 BW: 72 WW/Ratio: 713/96 YW/Ratio: 1236/98

EPDs	BW	WW	YW	Milk	Marb	RE	SB
	2.4	63	108	21	1+.26	1+.27	91.73

ULTRASOUND: %IMF/Ratio: 3.74/83 Ribeye/Ratio: 14.1/99 Jan. 28 Wt.: 1163

W/C UPSIDE POTENTIAL 520X
SITZ UPWARD 307R
RIVER HILLS ENTENSE 520N

SYDGEN ROYAL QUEEN 8304
MOGCK WHISPERING WIND 584
SYDGEN ROYAL QUEEN 6162

CONNEALY ONWARD
SITZ HENRIETTA PRIDE 81M
TWIN VALLEY PRECISION E161
BALDRIDGEEVERELDAENTENSE888J
MOGCK REALLY WINDY C622
MOGCK JANE C32
BR MIDLAND
S A F ROYAL QUEEN 0103

43 RBM POTENTIAL B157

Tag#: X006 Reg. #:18014458 Tattoo: B157

BD: 03/01/14 BW: 85 WW/Ratio: 804/104 YW/Ratio: 1263/100

EPDs	BW	WW	YW	Milk	Marb	RE	SB
	4.1	72	114	26	1+.26	1+.44	92.18

ULTRASOUND: %IMF/Ratio: 3.72/83 Ribeye/Ratio: 13.6/96 Jan. 28 Wt.: 1131

W/C UPSIDE POTENTIAL 520X
SITZ UPWARD 307R
RIVER HILLS ENTENSE 520N

RBM LUCY ANN X006
GENETICS BY DESIGN 049
RBM QH OBJECTIVE 188

CONNEALY ONWARD
SITZ HENRIETTA PRIDE 81M
TWIN VALLEY PRECISION E161
BALDRIDGEEVERELDAENTENSE888J
B/R NEW DESIGN 036
G G CLARA 859
QUAKER HILL OBJECTIVE 3J15
MISS LUCY 341 R B M

45 RBM POTENTIAL B173

Tag#: Y115 Reg. #:18014448 Tattoo: B173

BD: 03/10/14 BW: 90 WW/Ratio: 723/97 YW/Ratio: 1265/100

EPDs	BW	WW	YW	Milk	Marb	RE	SB
	6.2	63	101	27	1+.27	1+.69	101.58

ULTRASOUND: %IMF/Ratio: 3.71/00 Ribeye/Ratio: 13.2/00 Jan. 28 Wt.: 1131

W/C UPSIDE POTENTIAL 520X
SITZ UPWARD 307R
RIVER HILLS ENTENSE 520N

RBM BEEBE QUEEN Y115
H&K CC&7 H198
OX BOW BEEBE QUEEN 82613234

CONNEALY ONWARD
SITZ HENRIETTA PRIDE 81M
TWIN VALLEY PRECISION E161
BALDRIDGEEVERELDAENTENSE888J
SYDGEN C C & 7
BLACKCAP EMPRESS ELLSTON T15
REDLAND EMBLAZON 3234
OX BOW BEEBE QUEEN 3100

47 RBM IDENTITY B89

Tag#: P924 Reg. #:18019618 Tattoo: B89

BD: 02/06/14 BW: 86 WW/Ratio: 693/93 YW/Ratio: 1335/105

EPDs	BW	WW	YW	Milk	Marb	RE	SB
	3.1	55	102	27	1+.48	1+.72	125.19

ULTRASOUND: %IMF/Ratio: 4.15/92 Ribeye/Ratio: 15.3/108 Jan. 28 Wt.: 1350

KOUPALS B&B IDENTITY
SITZ UPWARD 307R
B&B ERICA 605

RBM EVENING TINGE 924
TC TOTAL 410
PRAIRIEDGE EVENING TINGE 21

CONNEALY ONWARD
SITZ HENRIETTA PRIDE 81M
G A R EXALTATION 3144
B&B ERICA 4064
BON VIEW NEW DESIGN 208
TC ERICA EILEEN 2047
BON VIEW BANDO 598
PRAIRIEDGE EVENING TINGE 14B

42 RBM POTENTIAL B152

Tag#: X240 Reg. #:18014456 Tattoo: B152

BD: 02/26/14 BW: 89 WW/Ratio: 693/93 YW/Ratio: 1295/102

EPDs	BW	WW	YW	Milk	Marb	RE	SB
	5.4	64	107	25	1+.54	1+.57	114.13

ULTRASOUND: %IMF/Ratio: 5.25/117 Ribeye/Ratio: 14.4/101 Jan. 28 Wt.: 1234

W/C UPSIDE POTENTIAL 520X
SITZ UPWARD 307R
RIVER HILLS ENTENSE 520N

RBM LASSIE X240
RIVER HILLS OBJECTIVE T195
RBM YUKON 936

CONNEALY ONWARD
SITZ HENRIETTA PRIDE 81M
TWIN VALLEY PRECISION E161
BALDRIDGEEVERELDAENTENSE888J
S S OBJECTIVE T510 0T26
RIVER HILLS BARBARA R330
MILLERS YUKON K98
MISS P FREDY R B M 8050

44 RBM POTENTIAL B165

Tag#: FB3738 Reg. #:18014468 Tattoo: B165

BD: 03/05/14 BW: 90 WW/Ratio: 749/100 YW/Ratio: 1258/99

EPDs	BW	WW	YW	Milk	Marb	RE	SB
	5.0	64	113	25	1+.25	1+.52	102.98

ULTRASOUND: %IMF/Ratio: 4.1/91 Ribeye/Ratio: 14.7/104 Jan. 28 Wt.: 1151

W/C UPSIDE POTENTIAL 520X
SITZ UPWARD 307R
RIVER HILLS ENTENSE 520N

GBS KOUPALS 402 9326 3738
GBS KOUPALS 402 9326
GBS MISS KOUPALS 402 3056

CONNEALY ONWARD
SITZ HENRIETTA PRIDE 81M
TWIN VALLEY PRECISION E161
BALDRIDGEEVERELDAENTENSE888J
KOUPALS B&B PRECISION 402
G B S MISS LANDMARK 8428
KOUPALS B&B PRECISION 402
G B S UNIVERSE 9453

46 RBM POTENTIAL B174

Tag#: W909 Reg. #:18014465 Tattoo: B174

BD: 03/10/14 BW: 81 WW/Ratio: 724/97 YW/Ratio: 1145/90

EPDs	BW	WW	YW	Milk	Marb	RE	SB
	3.9	63	107	27	1+.33	1+.55	103.19

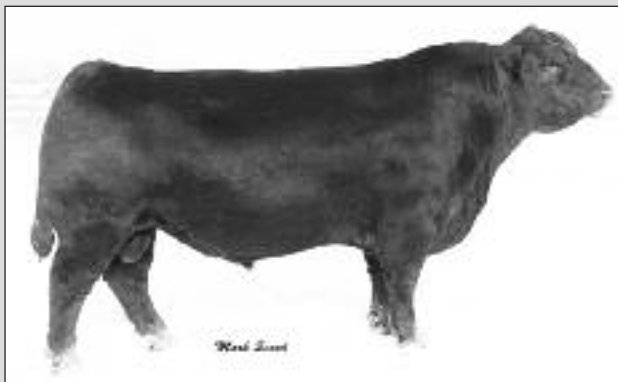
ULTRASOUND: %IMF/Ratio: 4.22/00 Ribeye/Ratio: 13.5/00 Jan. 28 Wt.: 1008

W/C UPSIDE POTENTIAL 520X
SITZ UPWARD 307R
RIVER HILLS ENTENSE 520N

RBM RAKETEER 909
RIVER HILLS RAKETEER R385
RBM DIRECTION 666

CONNEALY ONWARD
SITZ HENRIETTA PRIDE 81M
TWIN VALLEY PRECISION E161
BALDRIDGEEVERELDAENTENSE888J
BR MIDLAND
BAR S EDELLA 3047
WAR DIRECTION 4124 5321 1120
NEUTRON X3 R B M 203





SITZ UPWARD 307R

TLC COWBOY UP 7211

[AMF-DDF-NHF-RDF]

Reg. #: 17050496 BD: 01/07/11 Tattoo: 909Y

EPDs	BW	WW	YW	Milk	Marb	RE	\$B
	.6	65	121	36	.51	.75	113.84

SITZ UPWARD 307R
 JAR ANNIE 5129 976

CONNEALY ONWARD
 SITZ HENRIETTA PRIDE 81M
 TC ABERDEEN 759
 JAR ANNIE 2176 5192

CONNEALY LEAD ON
 ALTUNE OF CONANGA 6104
 SITZ VALUE 7097
 SITZ HENRIETTA PRIDE 1370
 C R A BEXTOR 872 5205 608
 TC BLACKBIRD 4034
 JAR BATTLE FORCE 916
 JAR ANNIE 078 2176

TLC Cowboy Up was our choice of the 2012 ND State Select Sale. Long bodied, calving ease with carcass.

48 RBM COWBOY B53

Tag#: Z21 Reg. #: 18014470 Tattoo: B53

BD: 01/09/14 BW: 59 WW/Ratio: 698/98 YW/Ratio: 1237/96

EPDs	BW	WW	YW	Milk	Marb	RE	\$B
	.7	67	114	30	I+.74	I+.82	122.35

ULTRASOUND: %IMF/Ratio: 6.57/129 Ribeye/Ratio: 14/104 Jan. 28 Wt.: 1244

TLC COWBOY UP 7211
 JAR ANNIE 5129 976

RBM LASSIE Z21
 RBM LASSIE X240

CONNEALY ONWARD
 SITZ HENRIETTA PRIDE 81M
 TC ABERDEEN 759
 JAR ANNIE 2176 5192
 MYTTY IN FOCUS
 BLACK CANA OF CONANGA 206
 RIVER HILLS OBJECTIVE T195
 RBM YUKON 936

Heifer bull. Out of 1st Calf Heifer.

49 RBM COWBOY B54

Tag#: Z93 Reg. #: 18014466 Tattoo: B54

BD: 01/11/14 BW: 60 WW/Ratio: 754/105 YW/Ratio: 1372/106

EPDs	BW	WW	YW	Milk	Marb	RE	\$B
	.8	61	109	31	I+.42	I+.66	108.49

ULTRASOUND: %IMF/Ratio: 3.64/72 Ribeye/Ratio: 13.9/104 Jan. 28 Wt.: 1386

TLC COWBOY UP 7211
 JAR ANNIE 5129 976

RBM STAN Z93
 RBM PACKER 456

SITZ UPWARD 307R
 CONNEALY ONWARD
 SITZ HENRIETTA PRIDE 81M
 TC ABERDEEN 759
 JAR ANNIE 2176 5192
 CONNEALY IMPRESSION
 SITZ BAR MAID 2345
 WOODHILL PACKER 194K-61N
 1407S OF R B M 284

Heifer bull. Out of 1st Calf Heifer.

50 RBM COWBOY B71

Tag#: Z71 Reg. #: 18014457 Tattoo: B71

BD: 01/25/14 BW: 65 WW/Ratio: 710/99 YW/Ratio: 1241/96

EPDs	BW	WW	YW	Milk	Marb	RE	\$B
	2.0	57	110	31	I+.28	I+.47	99.99

ULTRASOUND: %IMF/Ratio: 4.13/81 Ribeye/Ratio: 13.2/99 Jan. 28 Wt.: 1207

TLC COWBOY UP 7211
 JAR ANNIE 5129 976

RBM PRIDE Z71
 RBM YUKON 977

CONNEALY ONWARD
 SITZ HENRIETTA PRIDE 81M
 TC ABERDEEN 759
 JAR ANNIE 2176 5192
 TC FRICTION 5130
 BLKCP EMPRESS ELLSTON C171
 MILLERS YUKON K98
 DS MISS PRIDE 2913

Out of 1st Calf Heifer

51 RBM COWBOY B88

Tag#: Z219 Reg. #: 18043058 Tattoo: B88

BD: 02/05/14 BW: 74 WW/Ratio: 691/100 YW/Ratio: 1269/100

EPDs	BW	WW	YW	Milk	Marb	RE	\$B
	I+.3.2	I+.62		I+.34	I+.65	I+.53	

ULTRASOUND: %IMF/Ratio: 4.76/100 Ribeye/Ratio: 13.8/100 Jan. 28 Wt.: 1217

TLC COWBOY UP 7211
 JAR ANNIE 5129 976

RBM BLOSSOM Z219
 RIVER HILLS BLOSSOM R643

SITZ UPWARD 307R
 CONNEALY ONWARD
 SITZ HENRIETTA PRIDE 81M
 TC ABERDEEN 759
 JAR ANNIE 2176 5192
 VAR ROCKY 80029
 RIVER HILLS BLOSSOM R643

CONNEALY ONWARD
 SITZ HENRIETTA PRIDE 81M
 TC ABERDEEN 759
 JAR ANNIE 2176 5192
 HARB ONWARD 786 J H
 VERMILION LASS 0029
 WOODHILL ADMIRAL 77K
 RIVER HILLS BLOSSOM 4284

Out of 1st Calf Heifer

52 RBM COWBOY B95

Tag#: Z229 Reg. #: 18014453 Tattoo: B95

BD: 02/07/14 BW: 82 WW/Ratio: 828/116 YW/Ratio: 1452/113

EPDs	BW	WW	YW	Milk	Marb	RE	\$B
	4.7	70	124	37	I+.45	I+.79	128.51

ULTRASOUND: %IMF/Ratio: 4.4/86 Ribeye/Ratio: 14.7/110 Jan. 28 Wt.: 1380

TLC COWBOY UP 7211
 JAR ANNIE 5129 976

RBM CHARISMA Z229
 BASIN CHARISMA U691

CONNEALY ONWARD
 SITZ HENRIETTA PRIDE 81M
 TC ABERDEEN 759
 JAR ANNIE 2176 5192
 HARB ONWARD 786 J H
 VERMILION LASS 0029
 EXAR 263C
 BASIN CHARISMA 4866

Out of 1st Calf Heifer



53 RBM COWBOY B118

Tag#: Z233 Reg. #:18036821 Tattoo: B118

BD: 02/14/14 BW: 76 WW/Ratio: 716/100 YW/Ratio:1414/100

EPDs	BW	WW	YW	Milk	Marb	RE	\$B
	3.5	63		35	1+.51	1+.65	

ULTRASOUND: %IMF/Ratio: 4.44/89 Ribeye/Ratio: 15/111 Jan. 28 Wt.: 1357

TLC COWBOY UP 7211
SITZ UPWARD 307R
JAR ANNIE 5129 976

RBM CHARISMA Z233
VAR ROCKY 80029
BASIN CHARISMA U691

CONNEALY ONWARD
SITZ HENRIETTA PRIDE 81M
TC ABERDEEN 759
JAR ANNIE 2176 5192
HARB ONWARD 786 J H
VERMILION LASS 0029
EXAR 263C
BASIN CHARISMA 4866

Out of 1st Calf Heifer.



SS OBJECTIVE T510 0T26

R5 RAMBO 1531

[DDF]

Reg. #:17406497 BD: 08/18/11 Tattoo: 1531

EPDs	BW	WW	YW	Milk	Marb	RE	\$B
	.6	71	119	19	.13	.35	92.10

R5 RAMBO 753

SCR MISS ESSO 70650

Calving ease sire that will get up and grow.

S S OBJECTIVE T510 0T26
NORTHFORK FAME 1705
SCR SUPERIOR 210M-50203
SCR MISS ESSO 50643
S S TRAVELER 6807 T510
S S MISS RITA R011 7R8
S A F FAME OF NORTHFORK 231
NORTHFORK DIVERSITY 531
F A R SUPERIOR 210M
S A V ERICA 0067
CONNEALY RIGHT DIRECTION3499
SCR MISS ESSO

54 RBM RAMBO B175

Tag#: X168 Reg. #:18014449 Tattoo: B175

BD: 03/11/14 BW: 75 WW/Ratio: 741/99 YW/Ratio: 1304/103

EPDs	BW	WW	YW	Milk	Marb	RE	\$B
	1.0	63	108	19	1+.13	1+.35	97.22

ULTRASOUND: %IMF/Ratio: 3.82/NA Ribeye/Ratio: 12.6/NA Jan. 28 Wt.: 1174

R5 RAMBO 1531
R5 RAMBO 753
SCR MISS ESSO 70650

RBM ANN BASIN X168
WAR ALLIANCE 9126 6006
H FAME R B M 383

S S OBJECTIVE T510 0T26
NORTHFORK FAME 1705
SCR SUPERIOR 210M-50203
SCR MISS ESSO 50643
SITZ ALLIANCE 6595
WAR BANDO 6006 598 4053
WAR HALL OF FAME 8023
MISS 9440 OF R B M 451

Heifer bull, Maternal brother sold to Grazing Acres in 2014

55 RBM RAMBO B184

Tag#: X113 Reg. #:18041460 Tattoo: B184

BD: 03/20/14 BW: 85 WW/Ratio: 759/102 YW/Ratio: 1304/103

EPDs	BW	WW	YW	Milk	Marb	RE	\$B
	2.8	63	110	23	1+.24	1+.30	94.68

ULTRASOUND: %IMF/Ratio: 3.51/000 Ribeye/Ratio: 13.9/000 Jan. 28 Wt.:

R5 RAMBO 1531
R5 RAMBO 753
SCR MISS ESSO 70650

RBM BLACKCAP X113
RBM 112 EVERGREEN RITO 657
ALC BLACKCAP P90P

S S OBJECTIVE T510 0T26
NORTHFORK FAME 1705
SCR SUPERIOR 210M-50203
SCR MISS ESSO 50643
BEAR MTN OWYHEE 5012
WOODHILL EVERGREEN 439-88M
H A R B HIGH PLAINS 975 JH
A L C BLACKCAP E03F





HC RHINESTONE 5100

As we enter, the Charolais division, we are very excited to share this group of bulls with the public. Whether you're looking to produce feeder cattle or a seedstock producer wanting to make a product for your customers, we believe this group can do both. This is the best set of charolais we have ever produced to date. As you evaluate them we think you will feel the same. 14 of these bulls are from the great cow, HC Rhinestone 5100.



HC RHINESTONE 5100 X FIREWATER



LT BLUEGRASS 4017 P

RBM BLUEGRASS X032

Reg. #: M796326 BD: 01/06/10 Tattoo: X032

EPDs	BW	WW	YW	Milk	Marb	REA	Fat
	-0.8	21	50	9	.08	.24	0.025

LT BLUEGRASS 4017 P
 LT ASSERTION 1277 P
 LT PEARL'S BREEZE 2236 P

RBM CIGAR 2168
 TR MR CIGAR 6586S
 MISS OF TROJAN 812

EATONS ASSERT 9171
 LT ALLI'S CLASS 9140 P
 LT WYOMING WIND 4020 PLD
 LT UNLIMITED PEARL 7053P
 THOMAS MR CIGAR 1770L ET
 THOMAS MS WESTERN 2641M
 CONWAY OF TROJAN T202
 MISS OF TROJAN 325

Sold to Beare Cattle Farms in 2011. Big bellied bull with soft look with volume and muscle.

56 RBM BLUEGRASS X032 B40

Tag#: P902 Reg. #: EM853261 Tattoo: B40

BD: 01/01/14 BW: 93 WW/Ratio: 871/100 YW/Ratio: 1501/100

EPDs	BW	WW	YW	Milk	REA	Fat
	-0.7	23	44	11	0.25	0.015

ULTRASOUND: %IMF: 3.00 Ribeye: 16.50 Jan. 28 Wt.: 1606

RBM BLUEGRASS X032
 LT BLUEGRASS 4017 P
 RBM CIGAR 2168

HC RHINESTONE 5100
 LT EASY PRO 1158 PLD
 HC JACK 2082

LT ASSERTION 1277 P
 LT PEARL'S BREEZE 2236 P
 TR MR CIGAR 6586S
 MISS OF TROJAN 812
 LT UNLIMITED EASE 9108
 LT LADY MACBETH 8413 ETP
 JDJ JACK J258
 HC CADILLAC 8081

Not sure where to start, we have had a thing for this bull since he was born. He has caught many other visitors attention with his shear power, performance, muscle and look. We think this bull has loads of potential whether it be commercial or purebred man. He is backed by the excellent 5100 cow.



57 RBM BLUEGRASS X032 B43

Tag#: W559 Reg. #: EM853258 Tattoo: B43

BD: 01/04/14 BW: 93 WW/Ratio: 784/102 YW/Ratio: 1414/107

EPDs	BW	WW	YW	Milk	REA	Fat
	0.0	28	55	11	.25	0.015

ULTRASOUND: %IMF: 3.08 Ribeye: 15.70 Jan. 28 Wt.: 1516

RBM BLUEGRASS X032
 LT BLUEGRASS 4017 P
 RBM CIGAR 2168

HC RHINESTONE 5100
 LT EASY PRO 1158 PLD
 HC JACK 2082

LT ASSERTION 1277 P
 LT PEARL'S BREEZE 2236 P
 TR MR CIGAR 6586S
 MISS OF TROJAN 812
 LT UNLIMITED EASE 9108
 LT LADY MACBETH 8413 ETP
 JDJ JACK J258
 HC CADILLAC 8081

58 RBM BLUEGRASS X032 B47

Tag#: 1033D Reg. #: EM853257 Tattoo: B47

BD: 01/06/14 BW: 81 WW/Ratio: 717/93 YW/Ratio: 1226/93

EPDs	BW	WW	YW	Milk	REA	Fat
	-1.6	20	38	12	0.25	0.015

ULTRASOUND: %IMF: 3.17 Ribeye: 17.30 Jan. 28 Wt.: 1298

RBM BLUEGRASS X032
 LT BLUEGRASS 4017 P
 RBM CIGAR 2168

HC RHINESTONE 5100
 LT EASY PRO 1158 PLD
 HC JACK 2082

LT ASSERTION 1277 P
 LT PEARL'S BREEZE 2236 P
 TR MR CIGAR 6586S
 MISS OF TROJAN 812
 LT UNLIMITED EASE 9108
 LT LADY MACBETH 8413 ETP
 JDJ JACK J258
 HC CADILLAC 8081

59 RBM BLUEGRASS X032 B51

Tag#: V01U Reg. #: EM853254 Tattoo: B51

BD: 01/09/14 BW: 86 WW/Ratio: 789/100 YW/Ratio: 1315/100

EPDs	BW	WW	YW	Milk	REA	Fat
	-0.7	23	44	11	0.25	0.015

ULTRASOUND: %IMF: 2.94 Ribeye: 17.10 Jan. 28 Wt.: 1378

RBM BLUEGRASS X032
 LT BLUEGRASS 4017 P
 RBM CIGAR 2168

HC RHINESTONE 5100
 LT EASY PRO 1158 PLD
 HC JACK 2082

LT ASSERTION 1277 P
 LT PEARL'S BREEZE 2236 P
 TR MR CIGAR 6586S
 MISS OF TROJAN 812
 LT UNLIMITED EASE 9108
 LT LADY MACBETH 8413 ETP
 JDJ JACK J258
 HC CADILLAC 8081



KEYS TEN-ACIOUS 166S

Reg. #: M724532 BD: 03/10/06 Tattoo: 166S

EPDs	BW	WW	YW	Milk	Marb	RE	FAT
	2.3	45	87	-17	-0.16	0.90	0.001

KEYS MCTENDER 279P
KEYS ABE 70C
KEYS MCHENRY 24M
KEYS HANDYMAN PLD 255H

MISS KEY MAYBELL 73N
LTC MAYBELLINE 539 PLD
KEYS ABE 70C
KEYS MCHENRY 24M
KEYS HANDYMAN PLD 255H
MISS KEY DIANA 102G PL
MR KEY ABRAHAM 23
MISS KEY HURDLER 119Z
2UP PEUGEOT ET
MS KEY STYLISH STAR 149E
EC BRONSON 204 POLLED
LTC MISS NORWOOD 895X

Keys Ten-acious was used for his power, performance and total muscle

60 RBM TEN-ACIOUS B23

Tag#: M962 Reg. #: EM853264 Tattoo: B23

BD: 12/25/13 BW: 88 WW/Ratio: 869/113 YW/Ratio: 1451/110

EPDs	BW	WW	YW	Milk	REA	Fat
	0.5	44	75	-4	0.58	0.003

ULTRASOUND: %IMF: 3.88 Ribeye: 16.20 Jan. 28 Wt.: 1576

KEYS TEN-ACIOUS 166S
KEYS MCTENDER 279P
MISS KEY MAYBELL 73N
KEYS MCHENRY 24M
KEYS ABE 70C
KEYS HANDYMAN PLD 255H
LTC MAYBELLINE 539 PLD
LT UNLIMITED EASE 9108
LT LADY MACBETH 8413 ETP
JDJ JACK J258
HC CADILLAC 8081

HC RHINESTONE 5100
LT EASY PRO 1158 PLD
HC JACK 2082

Big middled, Heavy. A pounds heavy commercial man bull and cattle feeders dream bull.



61 RBM TEN-ACIOUS B30

Tag#: V808 Reg. #: EM853267 Tattoo: B30

BD: 12/25/13 BW: 90 WW/Ratio: 812/106 YW/Ratio: 1385/105

EPDs	BW	WW	YW	Milk	REA	Fat
	0.7	39	68	-2	0.58	0.003

ULTRASOUND: %IMF: 3.61 Ribeye: 18.10 Jan. 28 Wt.: 1512

KEYS TEN-ACIOUS 166S
KEYS MCTENDER 279P
MISS KEY MAYBELL 73N
KEYS MCHENRY 24M
KEYS ABE 70C
KEYS HANDYMAN PLD 255H
LTC MAYBELLINE 539 PLD
LT UNLIMITED EASE 9108
LT LADY MACBETH 8413 ETP
JDJ JACK J258
HC CADILLAC 8081

HC RHINESTONE 5100
LT EASY PRO 1158 PLD
HC JACK 2082

62 RBM TEN-ACIOUS B33

Tag#: V833 Reg. #: EM853263 Tattoo: B33

BD: 12/29/13 BW: 100 WW/Ratio: 751/98 YW/Ratio: 1279/97

EPDs	BW	WW	YW	Milk	REA	Fat
	2.1	32	58	-1	0.58	0.003

ULTRASOUND: %IMF: 3.98 Ribeye: 14.80 Jan. 28 Wt.: 1379

KEYS TEN-ACIOUS 166S
KEYS MCTENDER 279P
MISS KEY MAYBELL 73N
KEYS MCHENRY 24M
KEYS ABE 70C
KEYS HANDYMAN PLD 255H
LTC MAYBELLINE 539 PLD
LT UNLIMITED EASE 9108
LT LADY MACBETH 8413 ETP
JDJ JACK J258
HC CADILLAC 8081

HC RHINESTONE 5100
LT EASY PRO 1158 PLD
HC JACK 2082



63 RBM TEN-ACIOUS B35

Tag#: M950 Reg. #:EM853262 Tattoo: B35

BD: 12/30/13 BW: 84 WW/Ratio: 874/114 YW/Ratio: 1469/111

EPDs	BW	WW	YW	Milk	REA	Fat
	-0.1	45	77	-4	0.58	0.003

ULTRASOUND: %IMF: 2.86 Ribeye: 18.20 Jan. 28 Wt.: 1577

KEYS MCTENDER 279P
KEYS TEN-ACIOUS 166S
 MISS KEY MAYBELL 73N

KEYS MCHENRY 24M
 KEYS ABE 70C
 KEYS HANDYMAN PLD 255H
 LTC MAYBELLINE 539 PLD
 LT UNLIMITED EASE 9108
 LT LADY MACBETH 8413 ETP
 JDJ JACK J258
 HC CADILLAC 8081

LT EASY PRO 1158 PLD
HC RHINESTONE 5100
 HC JACK 2082



65 RBM TEN-ACIOUS B42

Tag#: V830 Reg. #:EM853259 Tattoo: B42

BD: 1/3/14 BW: 98 WW/Ratio: 855/100 YW/Ratio: 1313/100

EPDs	BW	WW	YW	Milk	REA	Fat
	0.9	35	62	-2	0.58	0.003

ULTRASOUND: %IMF: 3.34 Ribeye: 16.30 Jan. 28 Wt.: 1382

KEYS MCTENDER 279P
KEYS TEN-ACIOUS 166S
 MISS KEY MAYBELL 73N

KEYS MCHENRY 24M
 KEYS ABE 70C
 KEYS HANDYMAN PLD 255H
 LTC MAYBELLINE 539 PLD
 LT UNLIMITED EASE 9108
 LT LADY MACBETH 8413 ETP
 JDJ JACK J258
 HC CADILLAC 8081

LT EASY PRO 1158 PLD
HC RHINESTONE 5100
 HC JACK 2082

64 RBM TEN-ACIOUS B39

Tag#: V838 Reg. #:EM853260 Tattoo: B39

BD: 1/1/14 BW: 100 WW/Ratio: 822/107 YW/Ratio: 1449/109

EPDs	BW	WW	YW	Milk	REA	Fat
	2.1	41	74	-3	0.58	0.003

ULTRASOUND: %IMF: 3.07 Ribeye: 18.70 Jan. 28 Wt.: 1558

KEYS MCTENDER 279P
KEYS TEN-ACIOUS 166S
 MISS KEY MAYBELL 73N

KEYS MCHENRY 24M
 KEYS ABE 70C
 KEYS HANDYMAN PLD 255H
 LTC MAYBELLINE 539 PLD
 LT UNLIMITED EASE 9108
 LT LADY MACBETH 8413 ETP
 JDJ JACK J258
 HC CADILLAC 8081

LT EASY PRO 1158 PLD
HC RHINESTONE 5100
 HC JACK 2082



66 RBM TEN-ACIOUS B46

Tag#: M95 Reg. #:EM853256 Tattoo: B46

BD: 1/6/14 BW: 98 WW/Ratio: 816/106 YW/Ratio: 1326/100

EPDs	BW	WW	YW	Milk	REA	Fat
	1.8	38	63	-3	0.58	0.003

ULTRASOUND: %IMF: 3.08 Ribeye: 15.40 Jan. 28 Wt.: 1394

KEYS MCTENDER 279P
KEYS TEN-ACIOUS 166S
 MISS KEY MAYBELL 73N

KEYS MCHENRY 24M
 KEYS ABE 70C
 KEYS HANDYMAN PLD 255H
 LTC MAYBELLINE 539 PLD
 LT UNLIMITED EASE 9108
 LT LADY MACBETH 8413 ETP
 JDJ JACK J258
 HC CADILLAC 8081

LT EASY PRO 1158 PLD
HC RHINESTONE 5100
 HC JACK 2082

67 RBM TEN-ACIOUS B49

Tag#: M0174 Reg. #:EM853255 Tattoo: B49

BD: 1/8/14 BW: 98 WW/Ratio: 797/104 YW/Ratio: 1373/104

EPDs	BW	WW	YW	Milk	REA	Fat
	1.8	37	67	-2	0.58	0.003

ULTRASOUND: %IMF: 3.19 Ribeye: 17.00 Jan. 28 Wt.: 1449

KEYS MCTENDER 279P
KEYS TEN-ACIOUS 166S
 MISS KEY MAYBELL 73N

KEYS MCHENRY 24M
 KEYS ABE 70C
 KEYS HANDYMAN PLD 255H
 LTC MAYBELLINE 539 PLD
 LT UNLIMITED EASE 9108
 LT LADY MACBETH 8413 ETP
 JDJ JACK J258
 HC CADILLAC 8081

LT EASY PRO 1158 PLD
HC RHINESTONE 5100
 HC JACK 2082

**RAILE 2250 T077**

Reg. #: M749278 BD: 3/5/07 Tattoo: T077

EPDs	BW	WW	YW	Milk	Marb	RE	FAT
	1.3	41	81	15	0.18	0.81	0.013

JWK IMPRESSIVE D040 ET
FINKS 2250 OF 3575D040ET
 WCR MISS TRADITION 3575

SCRSUPERCHARLIE0767PD
RC FRANCESCA 0251
 RC FRANCESCA 9855

WCR SIR FA MAC 2244
 HBR LADY LIZ 721 P
 WCR SIR TRADITION 066
 WCR MISS DUKE 9026
 SCR CHARLIE 5702
 SC SUPER LADY 6744 PLD
 RC BOW DUKE 458A
 RC FRANCESCA 410

Performance type bull. Long bodied, smooth made

68 RBM RAILE B13

Tag#: M952 Reg. #: EM853266 Tattoo: B13

BD: 12/23/13 BW: 85 WW/Ratio: 883/115 YW/Ratio: 1438/109

EPDs	BW	WW	YW	Milk	REA	Fat
	0.4	43	72	11	0.54	0.009

ULTRASOUND: %IMF: 4.51 Ribeye: 16.00 Jan. 28 Wt.: 1565

RAILE 2250 T077
 FINKS 2250 OF 3575D040ET
 RC FRANCESCA 0251
 LT EASY PRO 1158 PLD
HC RHINESTONE 5100
 HC JACK 2082

JWK IMPRESSIVE D040 ET
 WCR MISS TRADITION 3575
 SCRSUPERCHARLIE0767PD
 RC FRANCESCA 9855
 LT UNLIMITED EASE 9108
 LT LADY MACBETH 8413 ETP
 JDJ JACK J258
 HC CADILLAC 8081

Crowd favorite of visitors that have seen him. You have to appreciate his depth, length, and muscle along with stout make up.

**70 RBM WRANGLER B96**

Tag#: V827 Reg. #: EM853250 Tattoo: B96

BD: 2/7/14 BW: 74 WW/Ratio: 709/92 YW/Ratio: 1143/86

EPDs	BW	WW	YW	Milk	REA	Fat
	-3.3	33	44	2	0.35	0.013

ULTRASOUND: %IMF: 2.86 Ribeye: 14.80 Jan. 28 Wt.: 1098

WR WRANGLER W601
 CMF 192 WRANGLER 256
 WR MISS PRINCESS T629
 LT EASY BLEND 5125 PLD
RBM BLEND 829
 FINKS LADY491618679108ET

BALDRIDGE FASTTRACK 82F
 CMF 138 OF D040 192
 OAKDALE DUKE 9003P
 WR EASE 4412
 LT UNLIMITED EASE 9108
 LT BRENDA 1014 PLD
 LT UNLIMITED EASE 9108
 FINKS LADY 1867 4X68BUDET

69 RBM RAILE B17

Tag#: M920 Reg. #: EM853265 Tattoo: B17

BD: 12/24/13 BW: 76 WW/Ratio: 652/85 YW/Ratio: 1234/93

EPDs	BW	WW	YW	Milk	REA	Fat
	-1.5	24	48	17	0.54	0.009

ULTRASOUND: %IMF: 3.90 Ribeye: 16.40 Jan. 28 Wt.: 1360

RAILE 2250 T077
 FINKS 2250 OF 3575D040ET
 RC FRANCESCA 0251
 LT EASY PRO 1158 PLD
HC RHINESTONE 5100
 HC JACK 2082

JWK IMPRESSIVE D040 ET
 WCR MISS TRADITION 3575
 SCRSUPERCHARLIE0767PD
 RC FRANCESCA 9855
 LT UNLIMITED EASE 9108
 LT LADY MACBETH 8413 ETP
 JDJ JACK J258
 HC CADILLAC 8081

**WR WRANGLER W601**

Reg. #: M779102 BD: 2/8/09 Tattoo: W601

EPDs	BW	WW	YW	Milk	Marb	RE	Fat
	-1.1	56	76	0	-0.07	0.59	0.015

CMF 192 WRANGLER 256
 BALDRIDGE FASTTRACK 82F
 CMF 138 OF D040 192
 OAKDALE DUKE 9003P
WR MISS PRINCESS T629
 WR EASE 4412

LT UNLIMITED EASE 9108
 BALDRIDGE SWEETHEART 53D
 WK IMPRESSIVE D040 ET
 CMF 138 OF 92 032
 VCR SIR DUKE 135 PLD
 MISS VELVEETA JANE 630
 LT UNLIMITED EASE 9108
 WR MAXINE 4402

WR Wrangler has outstanding calving ease bull with look that has raised numerous champions. The cattle also have great carcass value.

71 RBM WANGLER B107

Tag#: M92 Reg. #:EM853248 Tattoo: B107

BD: 2/11/14 BW: 94 WW/Ratio: 747/97 YW/Ratio: 1246/94

EPDs	BW	WW	YW	Milk	REA	Fat
	-0.7	38	54	1	0.35	0.013

ULTRASOUND: %IMF: 3.57 Ribeye: 15.10 Jan. 28 Wt.: 1198

WR WRANGLER W601
 CMF 192 WRANGLER 256
 WR MISS PRINCESS T629

RBM BLEND 829
 LT EASY BLEND 5125 PLD
 FINKS LADY491618679108ET

BALDRIDGE FASTTRACK 82F
 CMF 138 OF D040 192
 OAKDALE DUKE 9003P
 WR EASE 4412
 LT UNLIMITED EASE 9108
 LT BRENDA 1014 PLD
 LT UNLIMITED EASE 9108
 FINKS LADY 1867 4X6BUDET



Lot 70 & 71 Full Sister



EC GAME CHANGER 5030 PLD

Reg. #:M803413 BD: 3/12/11 Tattoo: 5030

EPDs	BW	WW	YW	MILK	MARB	RE	FAT
	3.9	63	112	-8	-0.19	1.12	-0.017

KEYS TEN-ACIOUS 166S
 KEYS MCTENDER 279P
 MISS KEY MAYBELL 73N

EC GRETCHEN 5030 P
 EC CHAMOMILE PLD 718G

KEYS MCHENRY 24M
 KEYS ABE 70C
 KEYS HANDYMAN PLD 255H
 LTC MAYBELLINE 539 PLD
 WCR SIR TRADITION 066
 VCR MISS MAC IV 317
 ASC ELIMINATOR 032
 HJL CAMILLA 515

]We purchased Game Changer from the great Eggleston program that is known for producing stout made functional cattle, thats what he has done, too.

72 RBM CHANGER B90

Tag#: 9200 Reg. #:M853251 Tattoo: B90

BD: 2/6/14 BW: 90 WW/Ratio: 651/93 YW/Ratio: 1261/100

EPDs	BW	WW	YW	Milk	REA	Fat
	1.7	45	76	-2	0.68	-0.010

ULTRASOUND: %IMF: 3.67 Ribeye: 13.10 Jan. 28 Wt.: 1269

EC GAME CHANGER 5030 PLD
 KEYS TEN-ACIOUS 166S
 EC GRETCHEN 5030 P

RBM STASH 9200
 CCR HAMS STASHER R801 P
 HC RHINESTONE 5100

KEYS MCTENDER 279P
 MISS KEY MAYBELL 73N
 M6 GRID MAKER 104 PET
 EC CHAMOMILE PLD 718G
 HC A 3336
 CCR MISS EASY M520 P
 LT EASY PRO 1158 PLD
 HC JACK 2082

73 RBM CHANGER B135

Tag#: Y134 Reg. #:M853245 Tattoo: B135

BD: 2/16/14 BW: 94 WW/Ratio: 683/98 YW/Ratio: 1193/99

EPDs	BW	WW	YW	Milk	REA	Fat
	2.9	37	74	3	0.66	-0.010

ULTRASOUND: %IMF: 3.13 Ribeye: 15.00 Jan. 28 Wt.: 1119

EC GAME CHANGER 5030 PLD
 KEYS TEN-ACIOUS 166S
 EC GRETCHEN 5030 P

RBM DUSTY TW Y134
 TR MR CIGAR 6586S
 HC MISS DUSTY 612

KEYS MCTENDER 279P
 MISS KEY MAYBELL 73N
 M6 GRID MAKER 104 PET
 EC CHAMOMILE PLD 718G
 THOMAS MR CIGAR 1770L ET
 THOMAS MS WESTERN 2641M
 HCCWINDSWEPT912PLDTWIN
 DUSTY OF TROJAN 007

74 RBM CHANGER B145

Tag#: 1199 Reg. #:M853242 Tattoo: B145

BD: 2/22/14 BW: 90 WW/Ratio: 735/105 YW/Ratio: 1255/105

EPDs	BW	WW	YW	Milk	REA	Fat
	2.7	42	78	2	0.65	-0.008

ULTRASOUND: %IMF: 3.88 Ribeye: 15.90 Jan. 28 Wt.: 1180

EC GAME CHANGER 5030 PLD
 KEYS TEN-ACIOUS 166S
 EC GRETCHEN 5030 P

RBM TROJAN CIGAR 1199
 TR MR CIGAR 6586S
 MISS OF TROJAN 812

KEYS MCTENDER 279P
 MISS KEY MAYBELL 73N
 M6 GRID MAKER 104 PET
 EC CHAMOMILE PLD 718G
 THOMAS MR CIGAR 1770L ET
 THOMAS MS WESTERN 2641M
 CONWAY OF TROJAN T202
 MISS OF TROJAN 325



75 RBM CHANGER B170

Tag#: X125 Reg. #: M853241 Tattoo: B170

BD: 3/9/14 BW: 94 WW/Ratio: YW/Ratio:

EPDs	BW	WW	YW	Milk	REA	Fat
	3.2	47	89	4	0.70	-0.008

ULTRASOUND: %IMF: 3.87 Ribeye: 15.80 Jan. 28 Wt.: 1378

EC GAME CHANGER 5030 PLD
KEYS TEN-ACIOUS 166S
EC GRETCHEN 5030 P

TR MS KIM'S LIMIT 1463 ET
WDZ FIREMAKER 6062 P ET
BCI MISS VERYLIMIT 6033P

KEYS MCTENDER 279P
MISS KEY MAYBELL 73N
M6 GRID MAKER 104 PET
EC CHAMOMILE PLD 718G
M6 GRID MAKER 104 PET
THOMASSWISSERSWEET1764ET
SKYMONT P UNLIMITED 0115
BCR ROSE GIRL 0093

Youngest bull in the sale backed by great cow that has produced many of the great females. Maternal Sister to Effling Heifer.



Females

76 RBM COWBOY B97
 Herd ID#: Z18 Reg. #: Tattoo: B97
 BD: 2/7/14 BW: 70 WW/Ratio: 572/100
EPDs BW WW YW Milk Marb RE \$B
 .8 61 111 31 I+.57 I+.57 118.91

TLC COWBOY UP 7211
 SITZ UPWARD 307R
 JAR ANNIE 5129 976
 CONNEALY ONWARD
 SITZ HENRIETTA PRIDE 81M
 TC ABERDEEN 759
 JAR ANNIE 2176 5192

RBM CHARISMA Z223
 VAR ROCKY 80029
 BASIN CHARISMA U691
 HARB ONWARD 786 J H
 VERMILION LASS 0029
 EXAR 263C
 BASIN CHARISMA 4866

Out of 1st Calf Heifer

77 RBM COWBOY B125
 Tag#: Z05 Reg. #: 18014479 Tattoo: B125
 BD: 02/15/14 BW: 60 WW/Ratio: 652/100
EPDs BW WW YW Milk Marb RE \$B
 .8 61 111 31 I+.57 I+.57 118.91

TLC COWBOY UP 7211
 SITZ UPWARD 307R
 JAR ANNIE 5129 976
 CONNEALY ONWARD
 SITZ HENRIETTA PRIDE 81M
 TC ABERDEEN 759
 JAR ANNIE 2176 5192

RBM PRIDE Z05
 GENETICS BY DESIGN 049
 RBM PRIDE X121
 B/R NEW DESIGN 036
 G G CLARA 859
 SITZ UPWARD 307R
 RBM YUKON 977

Out of 1st Calf Heifer

78 RBM RAMBO B151
 Tag#: X058 Reg. #: 18014481 Tattoo: B151
 BD: 02/26/14 BW: 72 WW/Ratio: 720/106
EPDs BW WW YW Milk Marb RE \$B
 1.5 66 113 24 I+-.30 I+.40 104.57

R5 RAMBO 1531
 R5 RAMBO 753
 SCR MISS ESSO 70650
 S S OBJECTIVE T510 0T26
 NORTHFORK FAME 1705
 SCR SUPERIOR 210M-50203
 SCR MISS ESSO 50643

RBM SKY BAND X058
 SITZ UPWARD 307R
 RBM RITO 4L6
 CONNEALY ONWARD
 SITZ HENRIETTA PRIDE 81M
 RITO 4L6 OF 2536 208
 NEUTRON OF R B M X3 92

Dam production BW 3 @ 99, WW 3 @ 104



79 RBM RAMBO B160
 Tag#: X017 Reg. #: 18014474 Tattoo: B160
 BD: 03/03/14 BW: 58 WW/Ratio: 692/101
EPDs BW WW YW Milk Marb RE \$B
 -1.9 59 101 24 I+-.29 I+.15 89.01

R5 RAMBO 1531
 R5 RAMBO 753
 SCR MISS ESSO 70650
 S S OBJECTIVE T510 0T26
 NORTHFORK FAME 1705
 SCR SUPERIOR 210M-50203
 SCR MISS ESSO 50643

RBM BANDO EXTRA X017
 GENETICS BY DESIGN 049
 RBM 6106-858
 B/R NEW DESIGN 036
 G G CLARA 859
 MOHNEN 6106-655
 YUKON 1795 R B M

Dam production BW 3 @ 100, WW 3 @ 107, YW 2 @ 103
 Maternal brother sold to Schultz in 2013 and Rau in 2014

80 RBM RAMBO B167
 Tag#: FB234 Reg. #: 18014475 Tattoo: B167
 BD: 03/07/14 BW: 81 WW/Ratio: 751/110
EPDs BW WW YW Milk Marb RE \$B
 2.9 60 105 20 I+.08 I+.23 81.23

R5 RAMBO 1531
 R5 RAMBO 753
 SCR MISS ESSO 70650
 S S OBJECTIVE T510 0T26
 NORTHFORK FAME 1705
 SCR SUPERIOR 210M-50203
 SCR MISS ESSO 50643

NEUTRON X3-162 RBM 234 FB
 MILLERS YUKON K98
 ANDORA BLKCP BESSIE 7087
 A&B YUKON 7150
 MISS EMPRESS H122 OF M A F
 TC STOCKMAN 365
 ANDORA BLKCP BESSIE 33

Dam production WW 7 @ 106

81 RBM RAMBO B179
 Tag#: X121 Reg. #: 18014476 Tattoo: B179
 BD: 03/17/14 BW: 70 WW/Ratio: 648/95
EPDs BW WW YW Milk Marb RE \$B
 1.7 59 107 24 I+-.29 I+.37 106.61

R5 RAMBO 1531
 R5 RAMBO 753
 SCR MISS ESSO 70650
 S S OBJECTIVE T510 0T26
 NORTHFORK FAME 1705
 SCR SUPERIOR 210M-50203
 SCR MISS ESSO 50643

RBM PRIDE X121
 SITZ UPWARD 307R
 RBM YUKON 977
 CONNEALY ONWARD
 SITZ HENRIETTA PRIDE 81M
 MILLERS YUKON K98
 DS MISS PRIDE 2913

Dam production BW 3 @ 94



82 RBM RAMBO B183

Tag#: FB1528 Reg. #: 18014477 Tattoo: B183

BD: 03/20/14 BW: 69 WW/Ratio: 696/102

EPDs	BW	WW	YW	Milk	Marb	RE	\$B
	1.5	59	98	22	1+.09	1+.22	74.06

R5 RAMBO 1531 R5 RAMBO 753 S S OBJECTIVE T510 OT26
NORTHFORK FAME 1705
SCR SUPERIOR 210M-50203
SCR MISS ESSO 50643

RBM DIRECTION 1528 WAR DIRECTION 4124 5321 1120 C A FUTURE DIRECTION 5321
WAR HALL OF FAME 1120 7076
PLAINVIEW REBAR 52V
LAKE VIEW JILT 253 LAKE VIEW JILT 743

Dam pro BW 5 @ 98, WW 5 @ 103

84 RBM RAMBO B187

Tag#: X073 Reg. #: 18014480 Tattoo: B187

BD: 03/21/14 BW: 68 WW/Ratio: 565/83

EPDs	BW	WW	YW	Milk	Marb	RE	\$B
	.1	53	96	19	1+.27	1+.47	99.66

R5 RAMBO 1531 R5 RAMBO 753 S S OBJECTIVE T510 OT26
NORTHFORK FAME 1705
SCR SUPERIOR 210M-50203
SCR MISS ESSO 50643

RBM STAN X073 SITZ UPWARD 307R CONNEALY ONWARD
SITZ HENRIETTA PRIDE 81M
RIVER HILLS RAKETEER R385
RBM RAKETEER 157 1407S OF R B M 284

Dam production BW 3 @ 88

83 RBM RAMBO B186

Tag#: FB0835 Reg. #: 18014482 Tattoo: B186

BD: 03/20/14 BW: 76 WW/Ratio: 705/103

EPDs	BW	WW	YW	Milk	Marb	RE	\$B
	2.4	62	101	20	1+.12	1+.35	88.67

R5 RAMBO 1531 R5 RAMBO 753 S S OBJECTIVE T510 OT26
NORTHFORK FAME 1705
SCR SUPERIOR 210M-50203
SCR MISS ESSO 50643

OX BOW EMMA E 835 KMK ALLIANCE 6595 187 SITZ ALLIANCE 6595
G A R EXT 916
OX BOW EMMA E 390 BON VIEW NEW DESIGN 878
SITZ EMMA E 2423

Dam production BW 3 @ 93, WW 3 @ 100

85 RBM FINAL PRODUCT B69

Tag#: Y11 Reg. #: 18019465 Tattoo: B69

BD: 01/22/14 BW: 67 WW/Ratio: 591/87

EPDs	BW	WW	YW	Milk	Marb	RE	\$B
	.3	53	97	25	1+.39	1+.50	86.66

CONNEALY FINAL PRODUCT CONNEALY PRODUCT 568 G A R RETAIL PRODUCT
EBONISTA OF CONANGA 471 PRIDE FINE OF CONANGA 566
CONNEALY DEEP CANYON 454
EBONISA OF CONANGA 5469

RBM RITO ROSE Y11 GENETICS BY DESIGN 049 B/R NEW DESIGN 036
RBM WULFFS 6106-1219 G G CLARA 859
MOHNEN 6106-655
CA ROSE 903 6174 410

Dam production BW 2 @ 95, WW 2 @ 99

Lots 86-196 Sell as Commercial Angus Heifers

These heifers are mostly out of RBM genetics. The heifers are Angus based and have the cow making look! The heifers are long, feminine and gentle with great genetics to make profitable cows. The heifers will weigh 775-825 on sale day. The heifers are fed to grow and will stay sound and not get fleshy. They are all running together in one 5-10 acre pen. The heifers are on the same vaccination program as the registered cattle. We will sell the heifers in numerical order (84-233) the bidder has the option to take 1-150 head in order. They will be sorted into groups of 50-60 head lots the week of the sale. Heifers may be fed until May 1-15 at cost - talk to Mike or Ryan prior to sale to discuss this option.



Thank you
TO OUR PAST BIDDERS AND BUYERS!

Best guarantee in the business – the RBM GUARANTEE

PPF **NEXT STEP** 2036

Reg: AAA 17367599



BW: 0.3
WW: 64
YW: 117
Milk: 32
Marb: 0.26
RE: 0.72
\$B: 90.93

Owners: RBM Livestock, SD
Big Rok Angus, MN
Prairie Pride Angus, ND

Semen Available

Contact owners for
more information.

** The only outcross calving
ease bull that was found
in the 2013 bull sale season.

Sire: SydGen 928 Destination 5420 • Dam: Flying V Miss Pride 426

RBM TR **RHINESTONE** Z38

Reg: EM823104



BW: -0.4
WW: 28
YW: 50
Milk: 10
REA: 0.27
Fat: 0.002

5100 x LT Bluegrass
Sold in our 2013 Bull Sale to
Thomas Ranch, Harrod, SD.
High selling bull for \$15,000.

Semen Available

Contact **T**homas Ranch
for more information.

Sire: LT BLUEGRASS 4017 P • Dam: HC RHINESTONE 5100

Give us a call for more information on these bulls!



Mike & Ryan Bergh Families
44115 155th St.
Florence, SD 57235



Address Service Requested



Sunday
MARCH 8 2015
8:00 - 1:00 PM

at the ranch • Florence, South Dakota